

Opening SPIRE data from the Observation Context viewer:

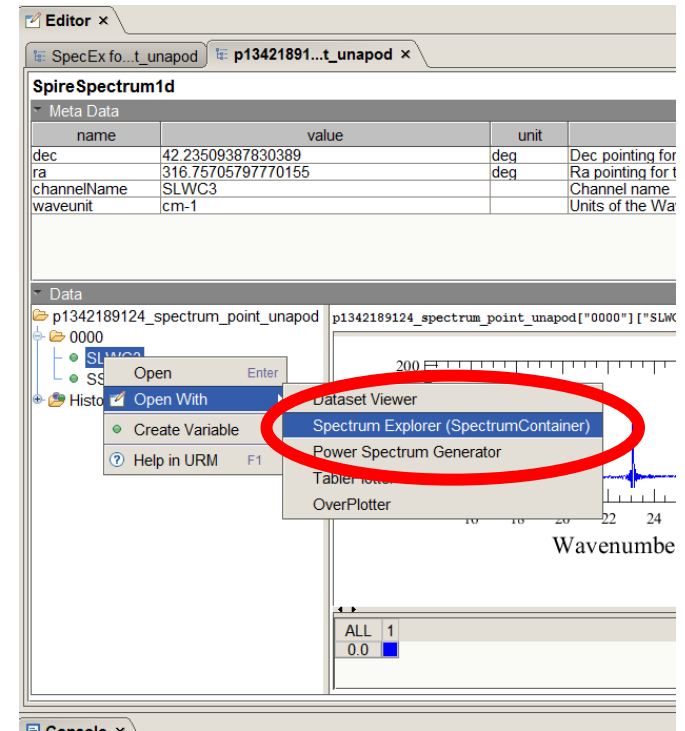
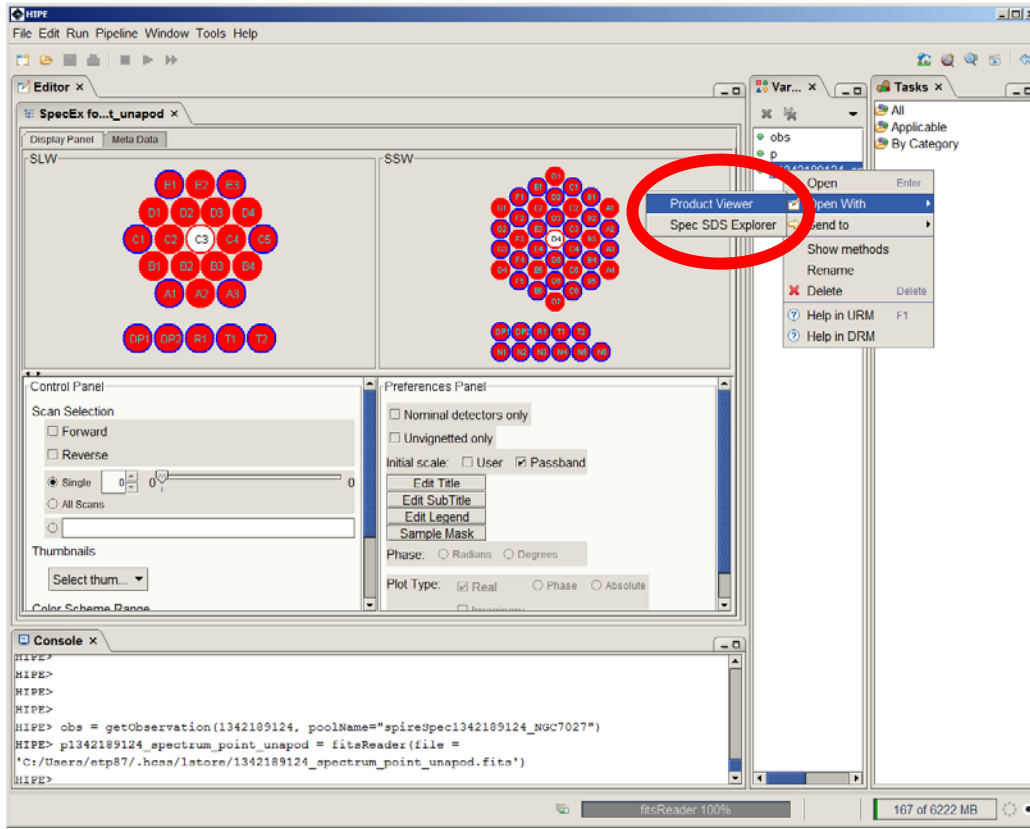
The screenshot shows the HIPE-obs application window. The main area displays a plot of flux (Jy) versus Wavenumber (cm⁻¹) for the observation 'SpireSpectrum1d'. The plot shows several sharp peaks. A context menu is open over the plot, with the option 'Spectrum Explorer (SpectrumContainer)' highlighted in blue and circled in red. The console at the bottom shows the command: HIPE> obs = getObservation(1342189124, poolName='spirespec1342189124_NGC7027')

Need to open a single
“Spectrum Container” in
 the SpectrumExplorer

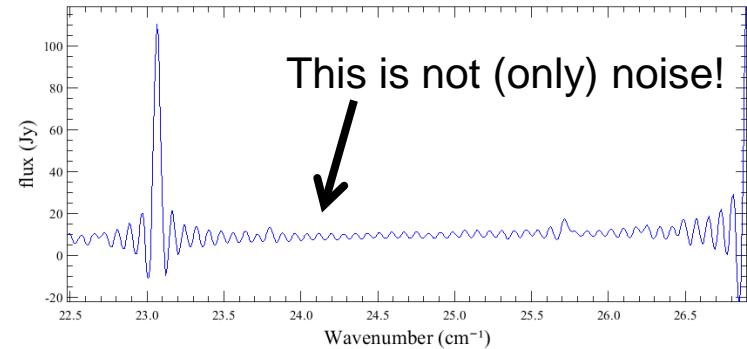
For SPIRE, each individual
 detector has its own
 container
(SpireSpectrum1d)

But, can't open directly from the SDS Explorer yet though...

→ open the data with ProductViewer instead:



- The SpectrumExplorer Statistics tool does not give the real noise for SPIRE data if there are many lines (the ringing in the spectral line shape confuses it!)
- The noise is contained in the “**error**” column
(*The standard error on the mean over all repeated scans*)



Editor x

p13421891...unapod_1 x TPL (p134...napod_1)

SpireSpectrum1d

| name | value | unit | |
|-------------|--------------------|------|---------|
| dec | 42.23509387830389 | deg | Dec. po |
| ra | 316.75705797770155 | deg | Ra. poi |
| channelName | SLWC3 | | Chann |
| waveunit | cm-1 | | Units o |

Data

p1342189124_spectrum_point_unapod_1 p1342189124_spectrum_point_unapod_1["0000"]

0000

- SLWC3
- SSW

History

- Open
- Open With
- Create Variable
- Help in URM

Dataset

- Spectrum Explorer (SpectrumContainer)
- Power Spectrum Generator
- TablePlotter**
- OverPloter

flu

Open with
TablePlotter

Editor x

p13421891...unapod_1 TPL (p134...napod_1) x

Compare with HSpot prediction
(for 17 reps in HR → 0.3 Jy)

error(Jy)

wave(cm⁻¹)

x-axis: -offset wave 1 y-axis: offset error

4.0.784

Display Style

Ln No line

Navigation

Fast

Selections

Hide Unhide

Excl. Select Unhide All

All Cole Show All

Extract Layer Props

Overlay plots

Overlay

Show legend

Remove a layer

Choose “**error**”