

# Stellar Disk Evolution

PACS & SPIRE  
mapping  
of beta Pic and Vega

Presented by Göran Olofsson (PI)

# The team

## **SPIRE**

Mike Barlow  
Walter Gear  
Jane Greaves  
Wayne Holland  
Rob Ivison  
Bruce Sibthorpe  
Bill Dent  
Adrian Glauser  
Helen Walker  
Tanya Lim  
Sarah Leeks  
  
Martin Cohen  
  
Eric Pantin  
  
James di Francesco  
Brenda Matthews  
  
Göran Olofsson  
Alexis Brandeker

## **Herschel Science Centre**

Göran Pilbratt  
Malcolm Fridlund  
Anna Heras

### **Mission scientist**

Paul Harvey

### **PACS**

Christoffel Waelkens  
Bart Vandenbussche  
Bram Acke  
Joris Blommaert  
Pierre Royer

### **HIFI**

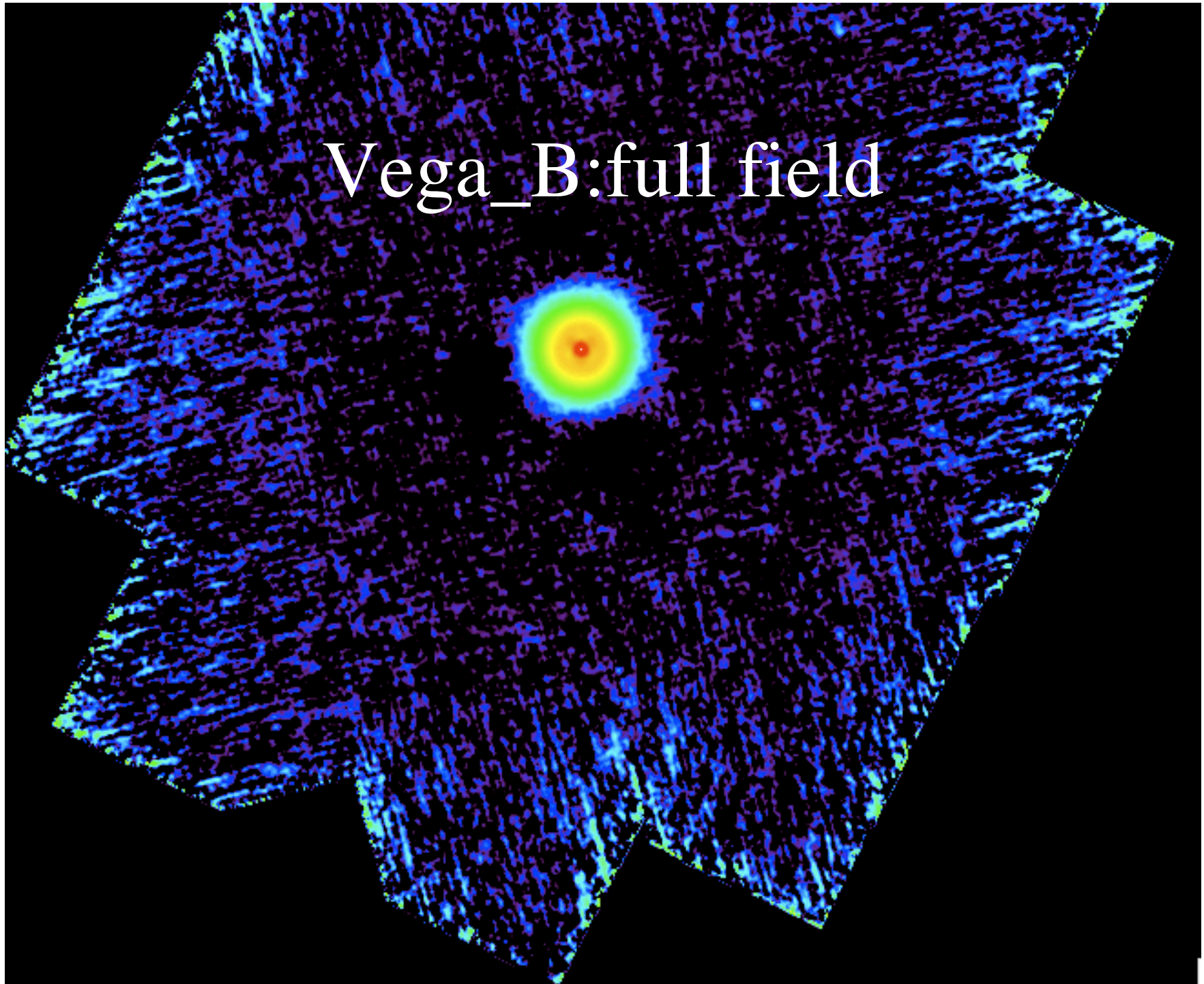
René Liseau  
Michiel Hogerheijde

# Image reductions

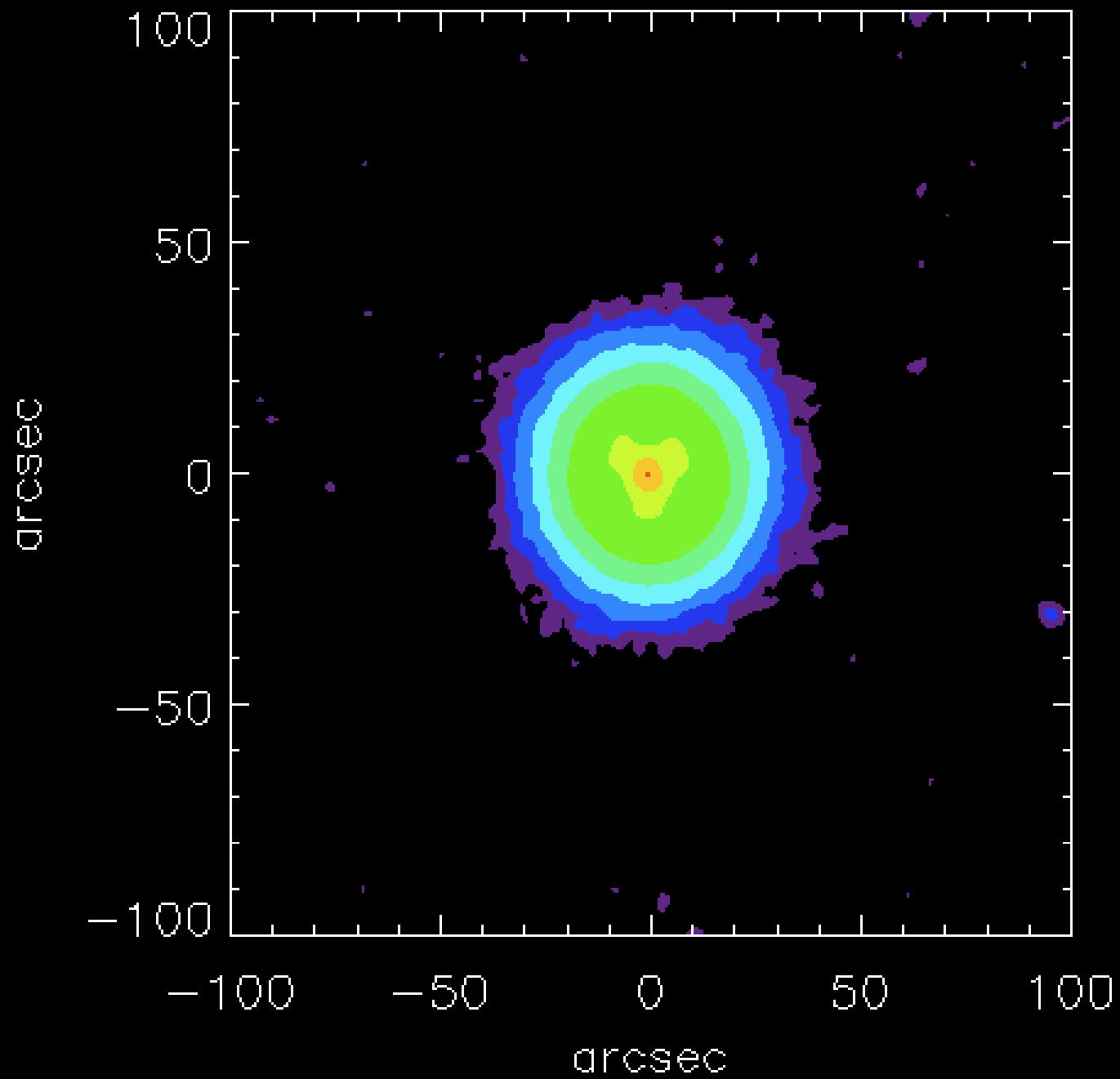
PACS: Bart Vandenbussche

SPIRE: Bruce Sibthorpe

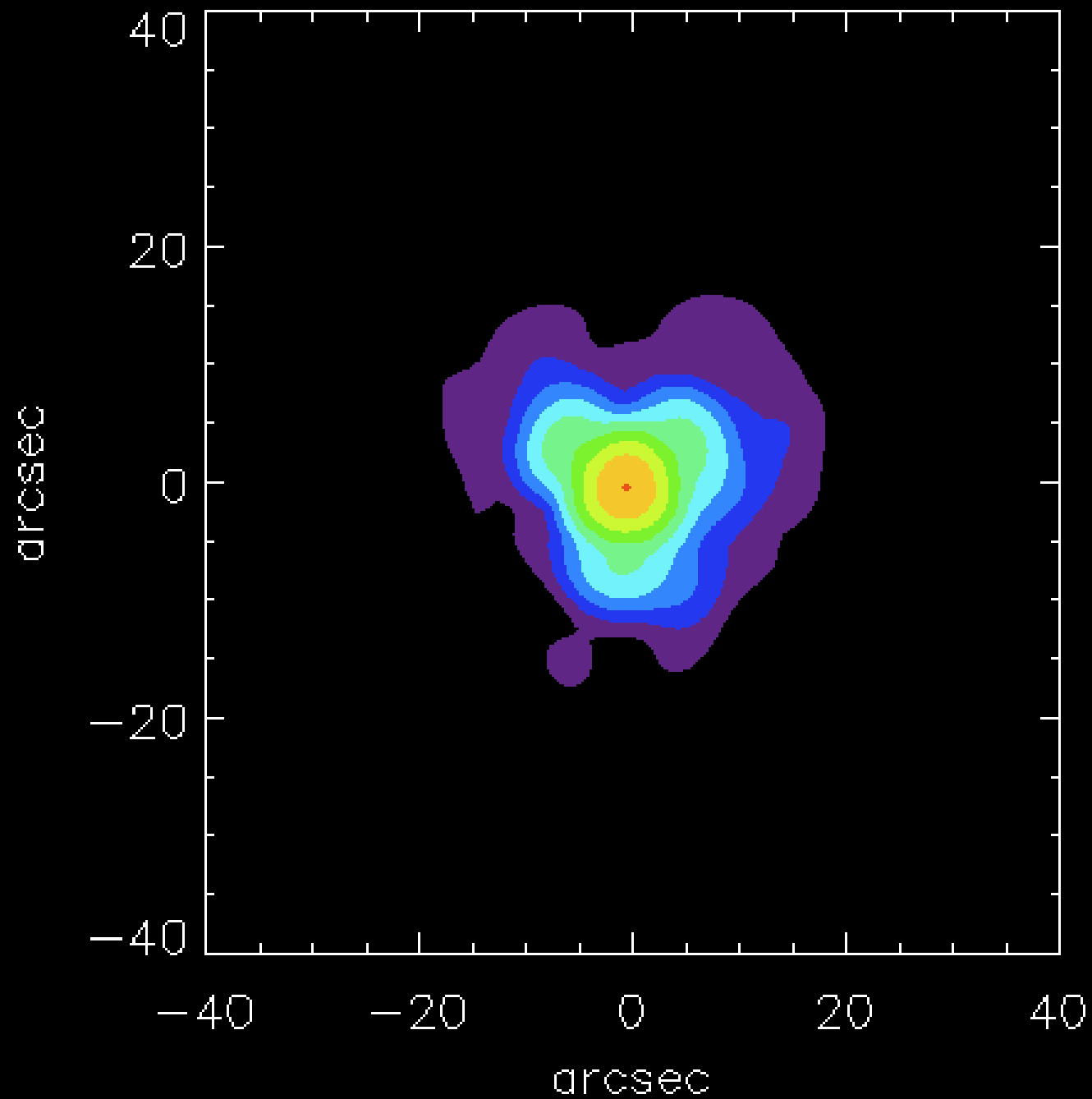
Vega\_B:full field



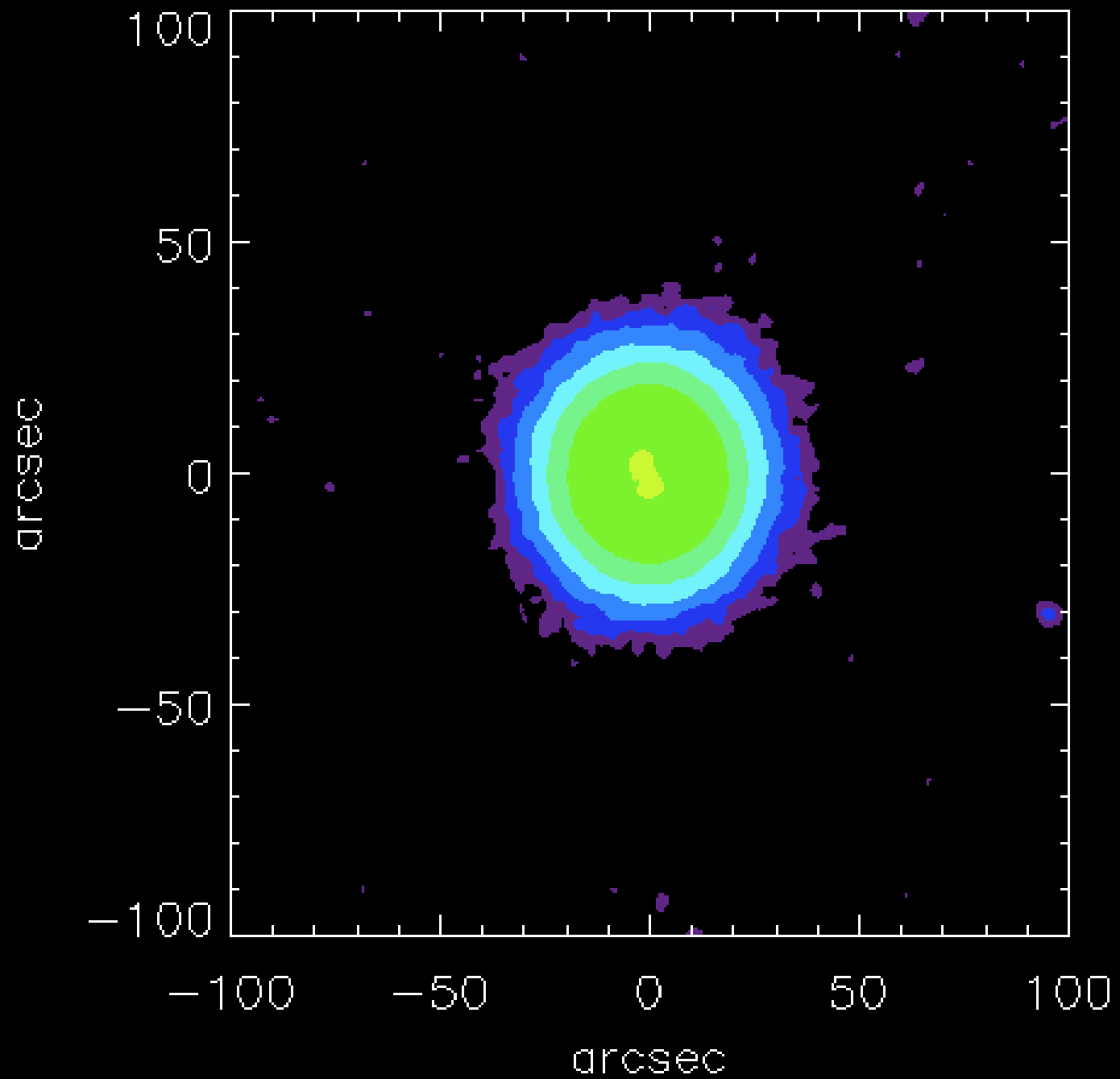
# Vega\_B\_log



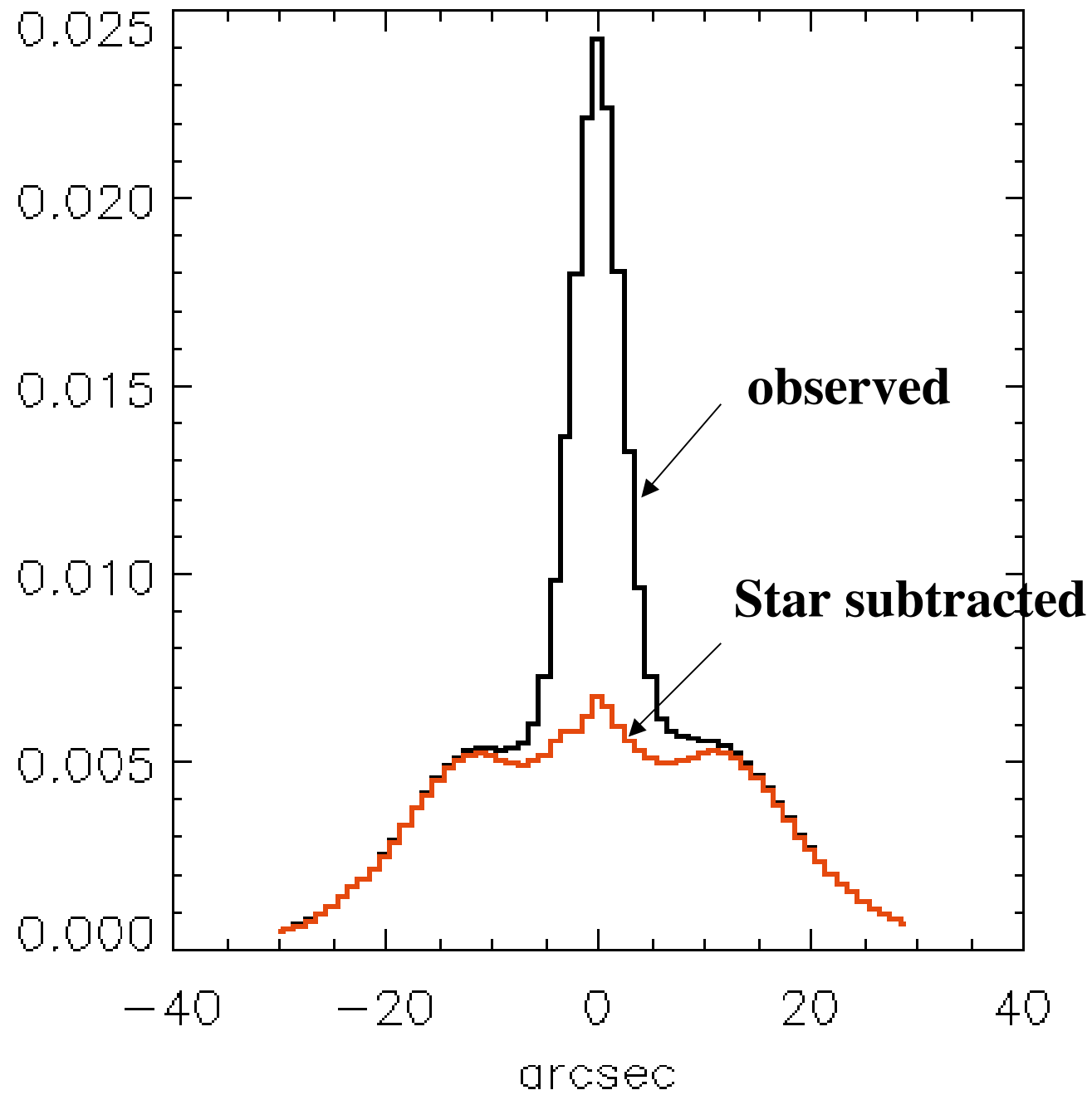
PSF\_B\_log



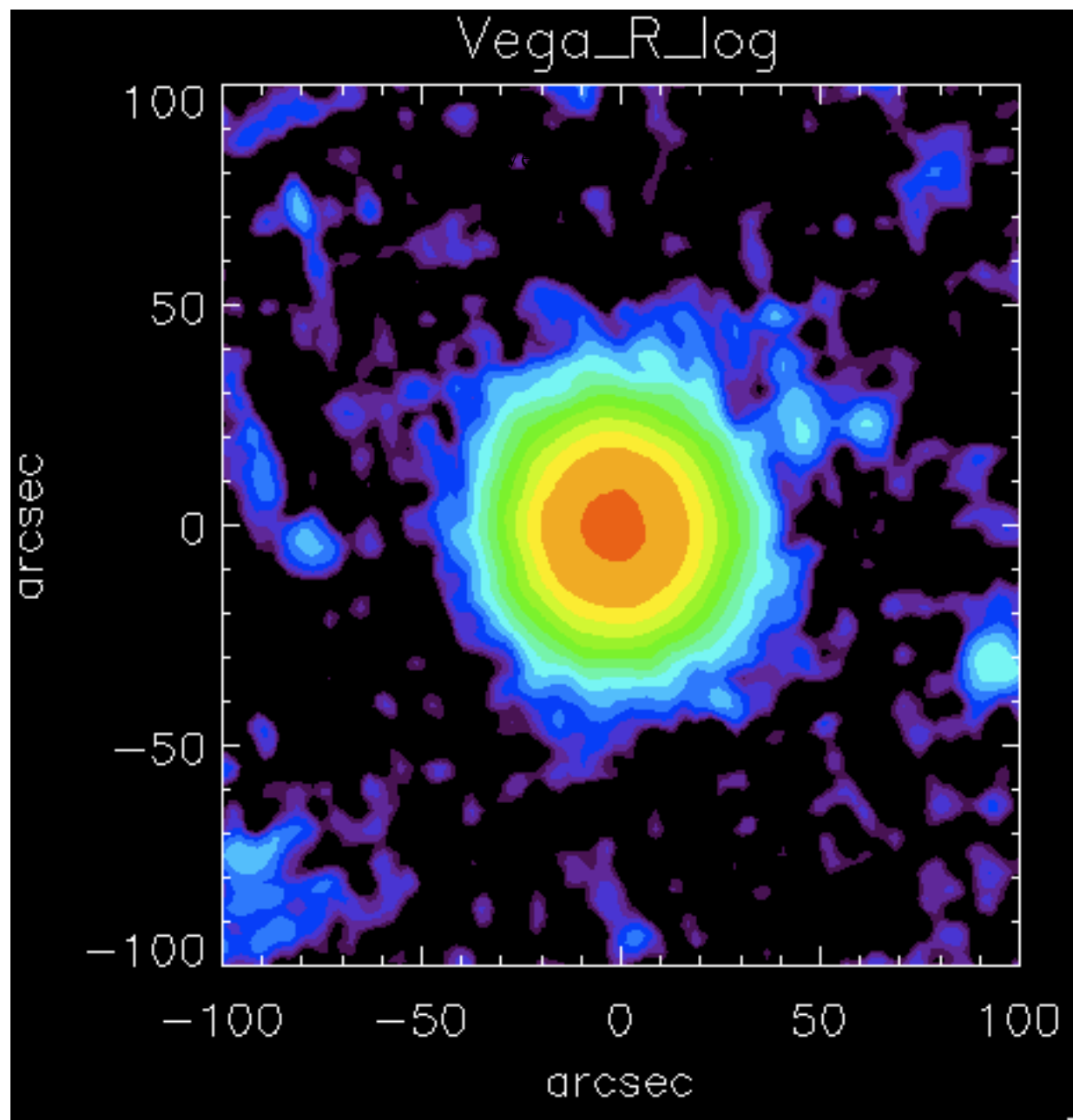
# Vega-star\_B\_log



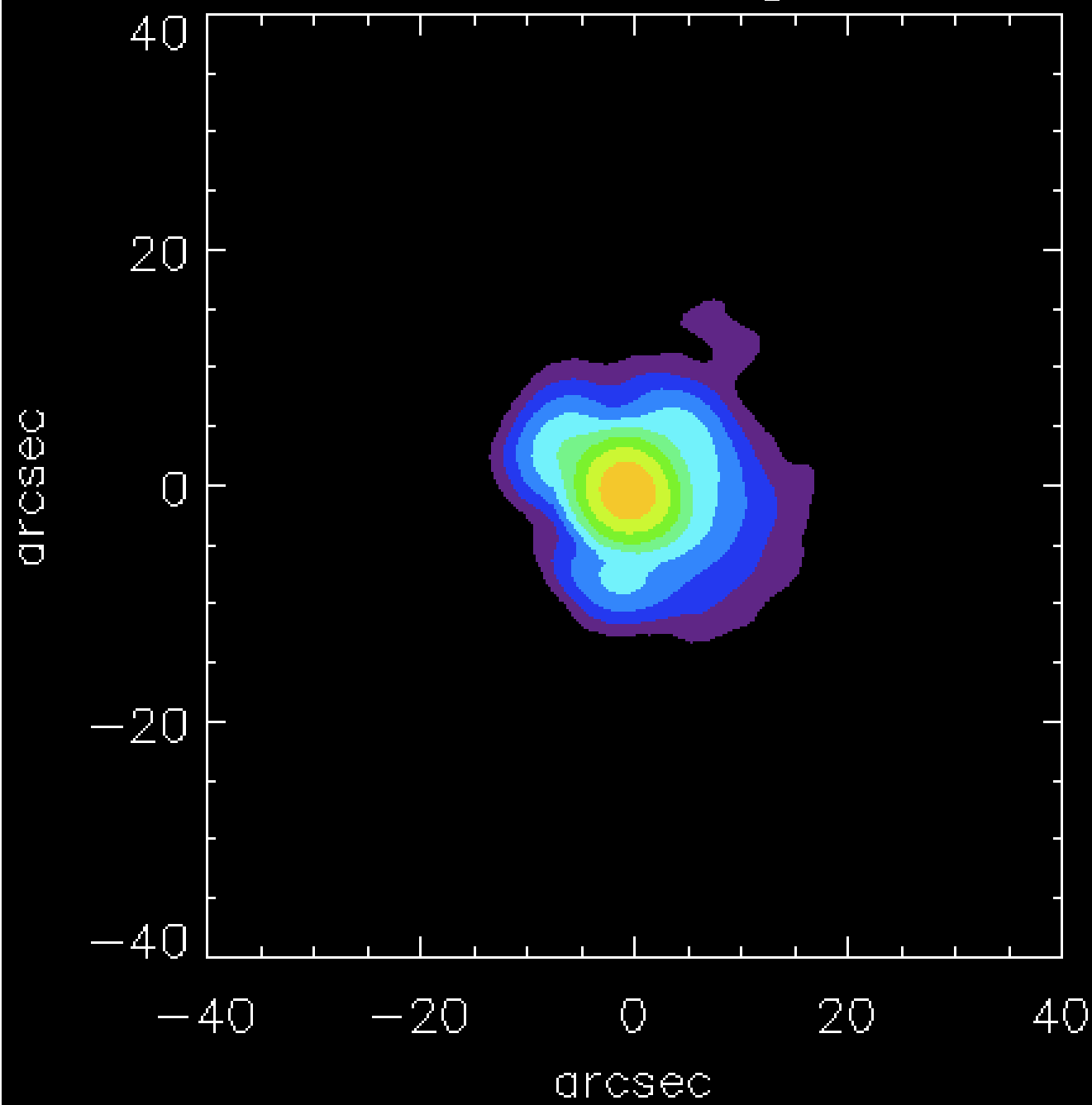
# Vega\_cut\_B



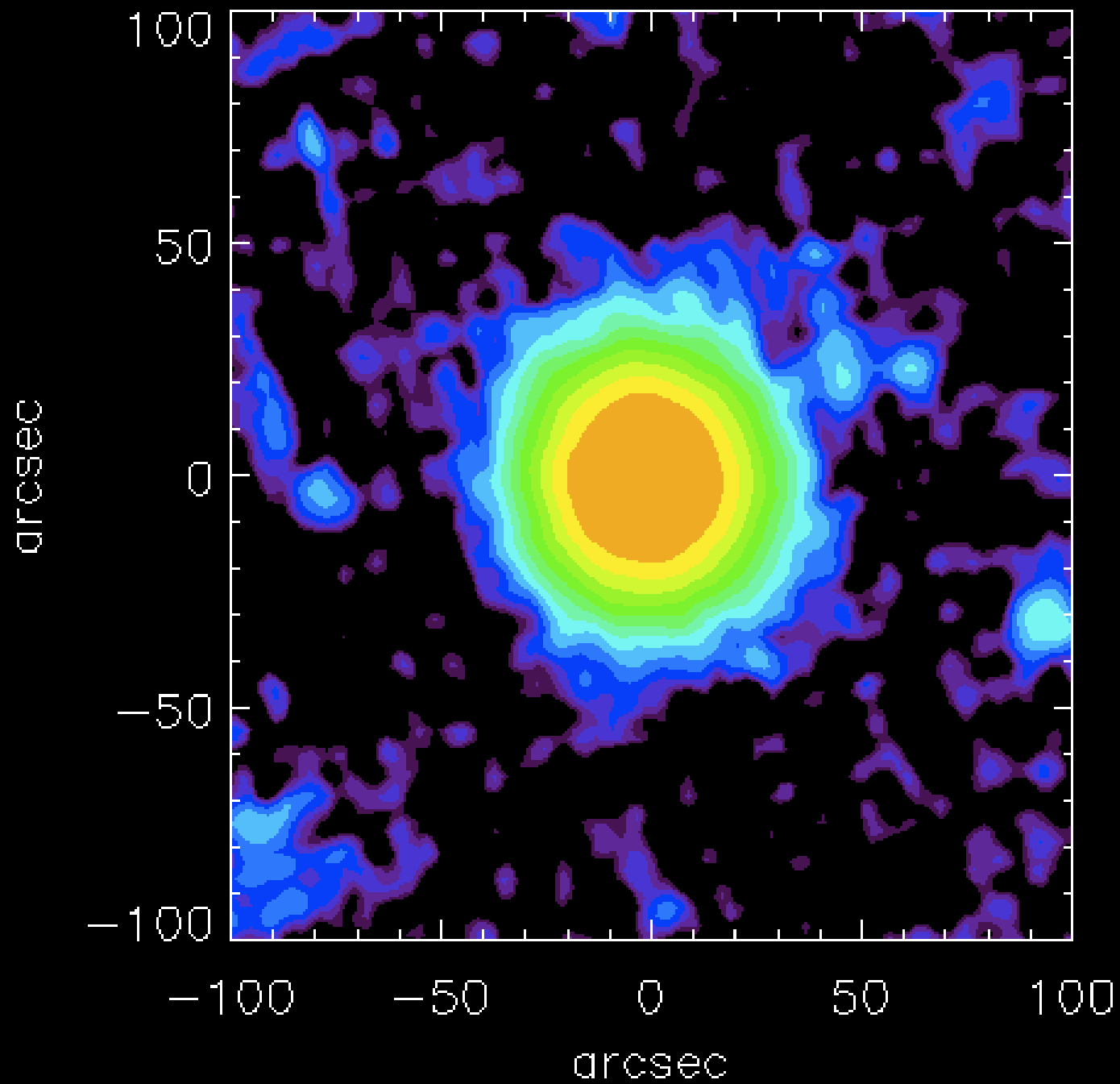




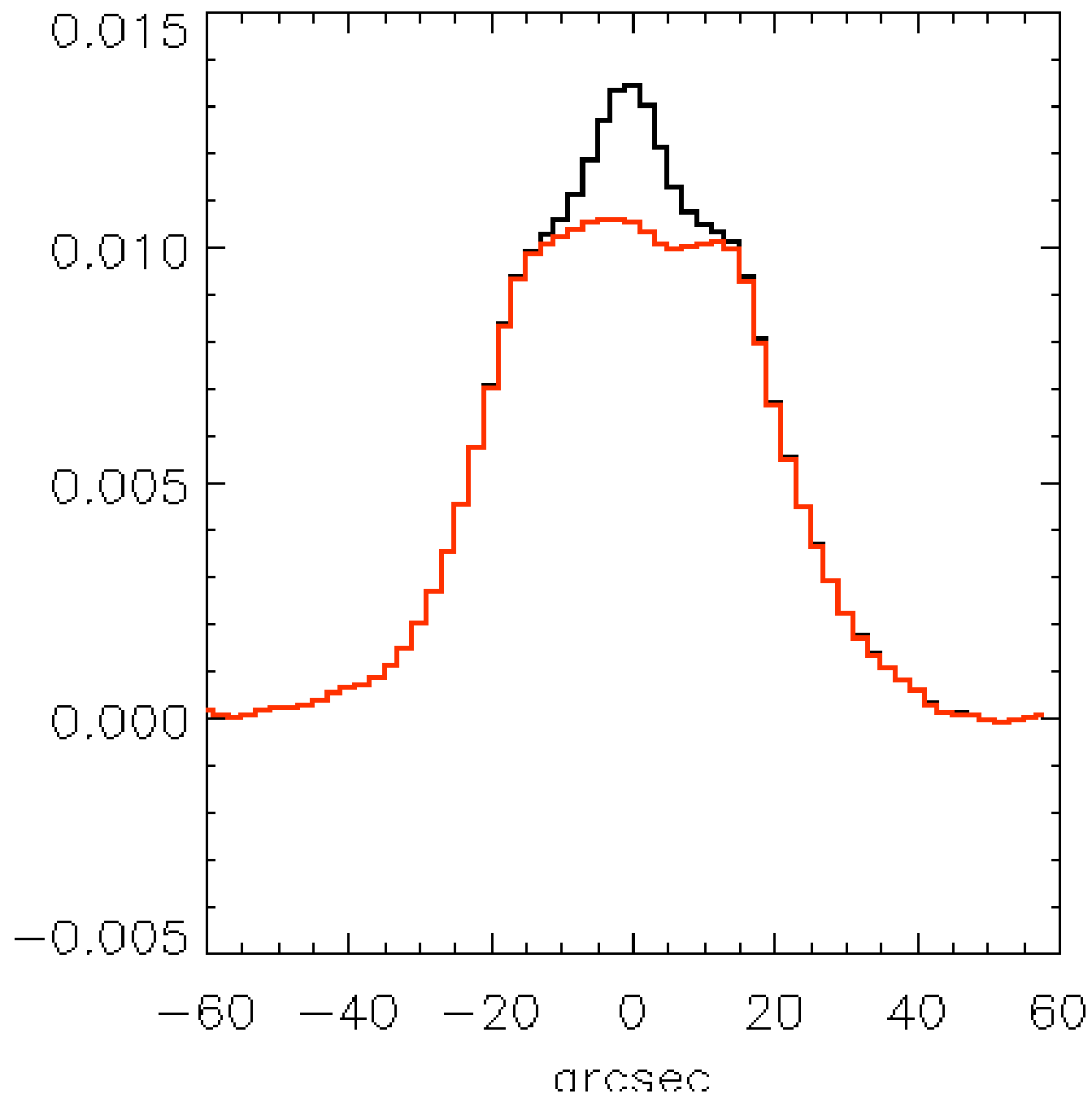
PSF\_R\_log



# Vega-star\_R\_log



# Vega\_cut\_R

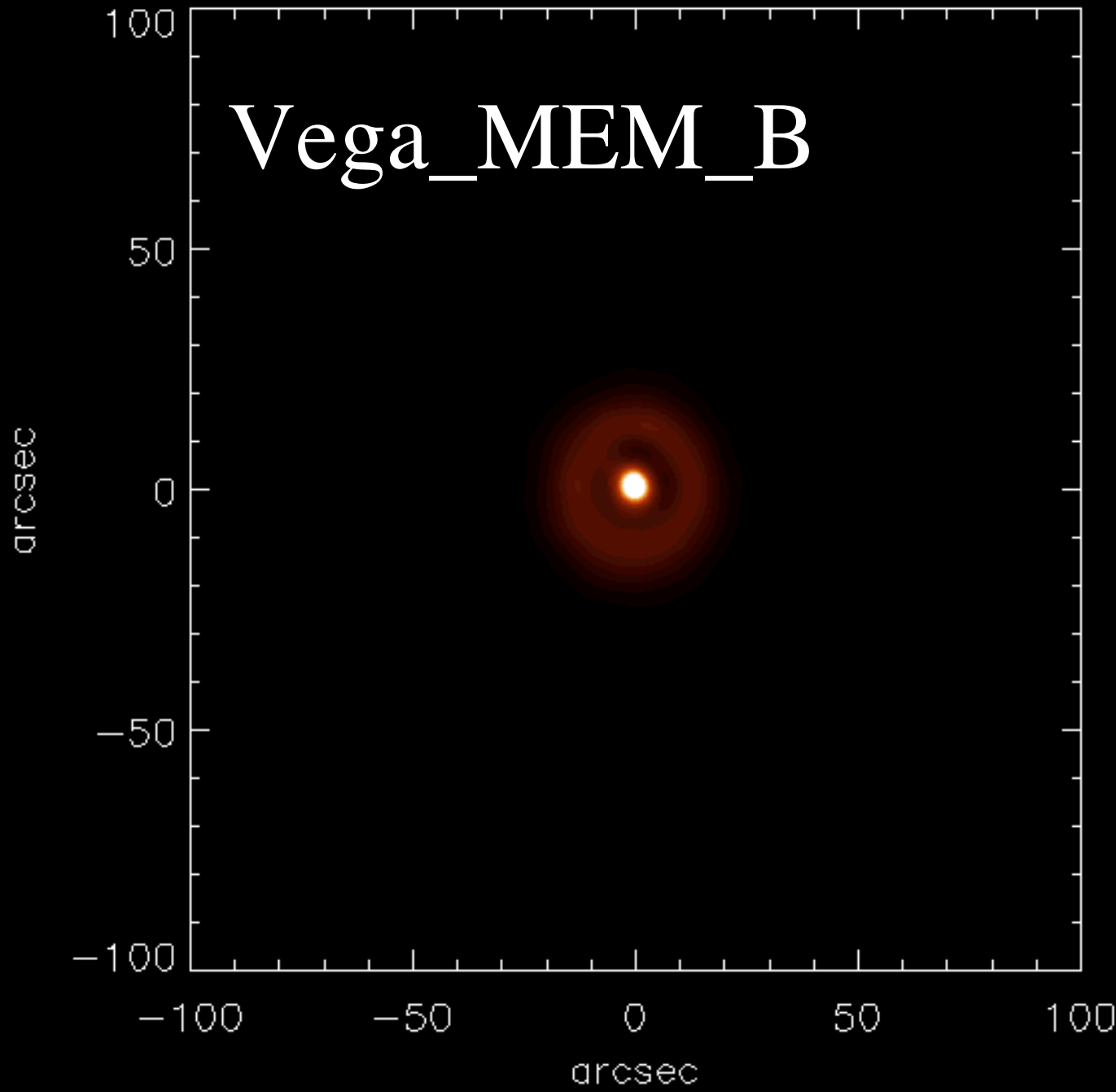


**The PACS B & R images are oversampled  
by a factor 3 and the S/N is good =>**

**De-convolution should be possible!**

Vega\_B

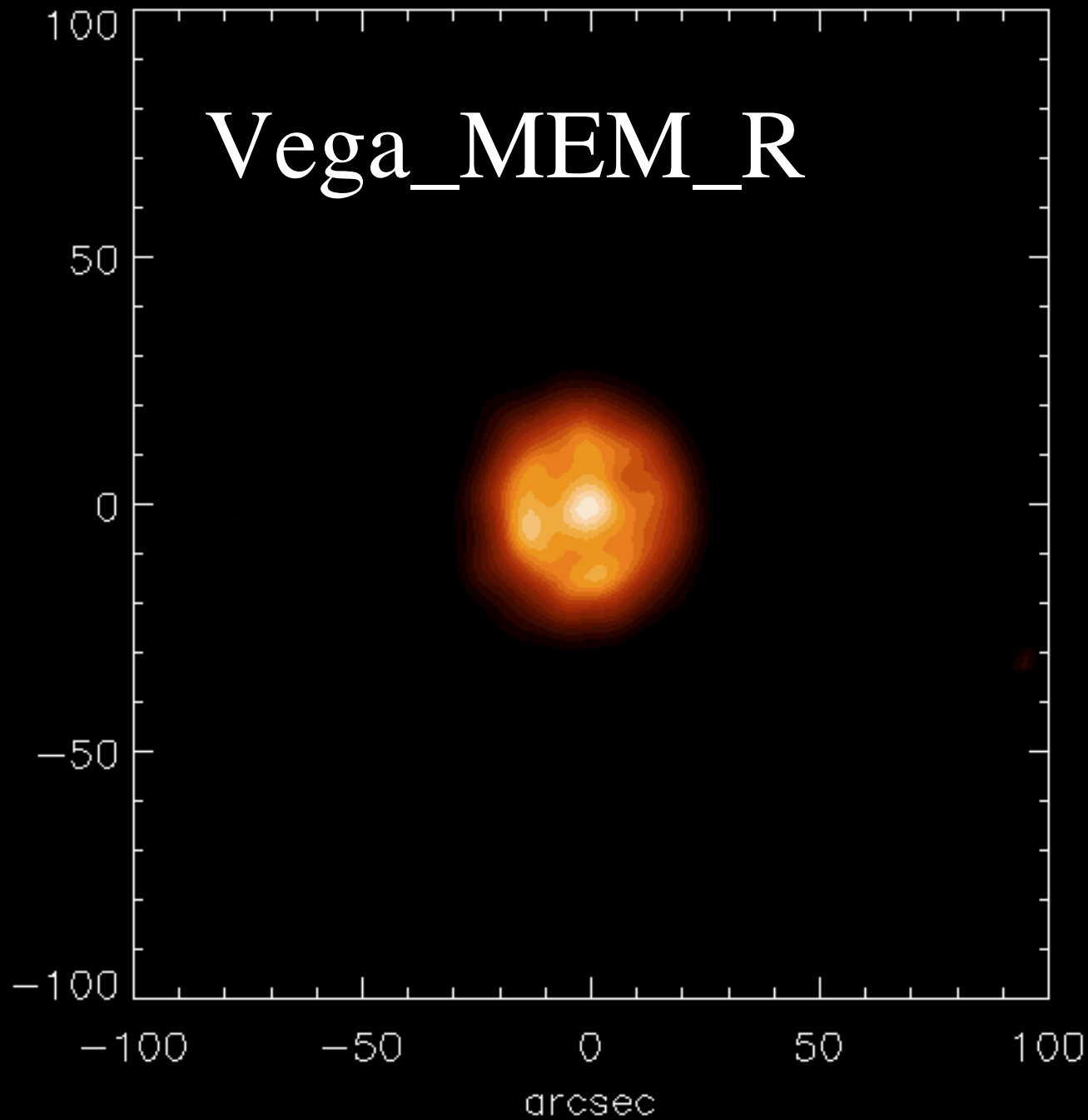
Vega\_MEM\_B

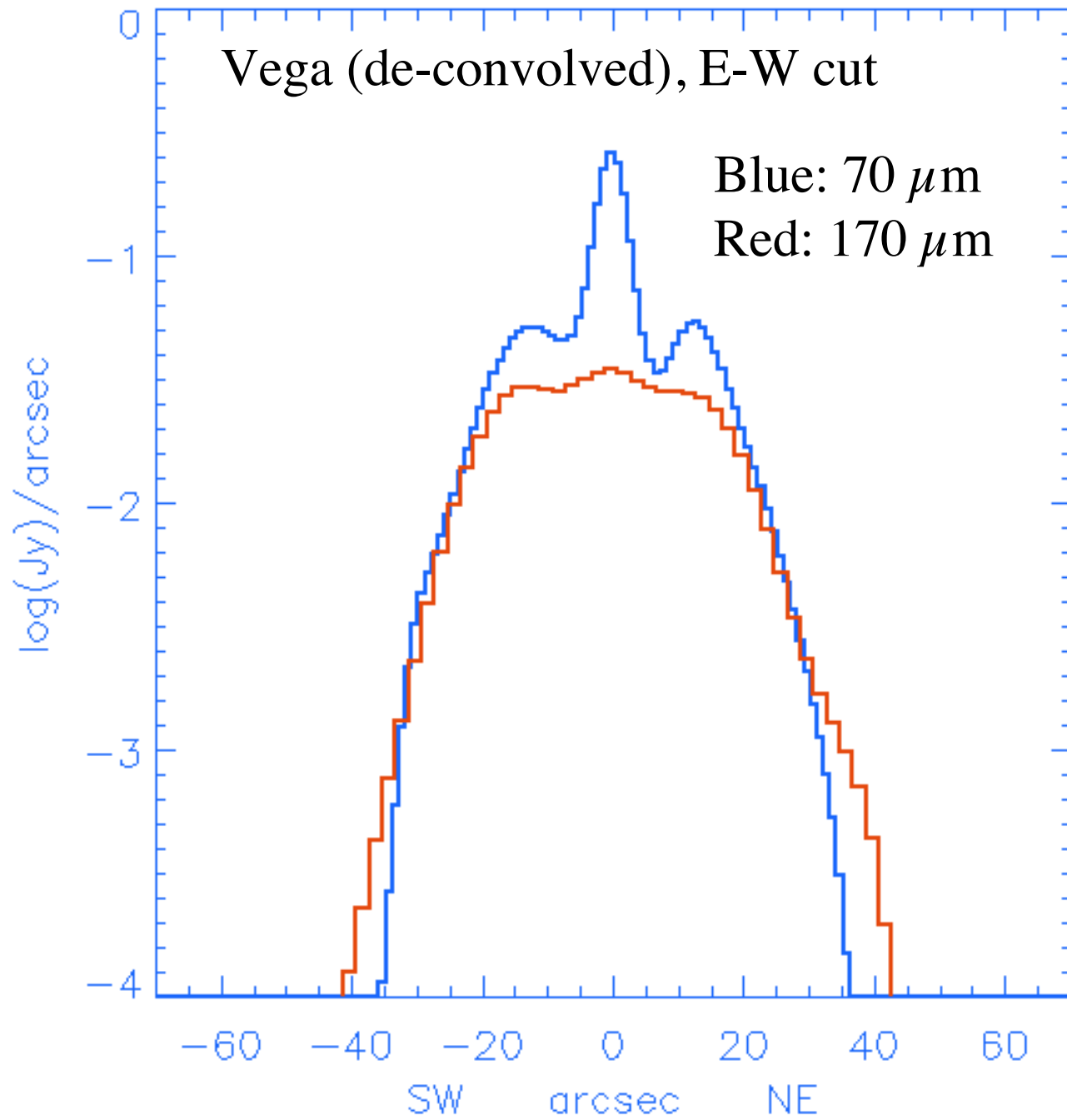


Vega\_R

Vega\_MEM\_R

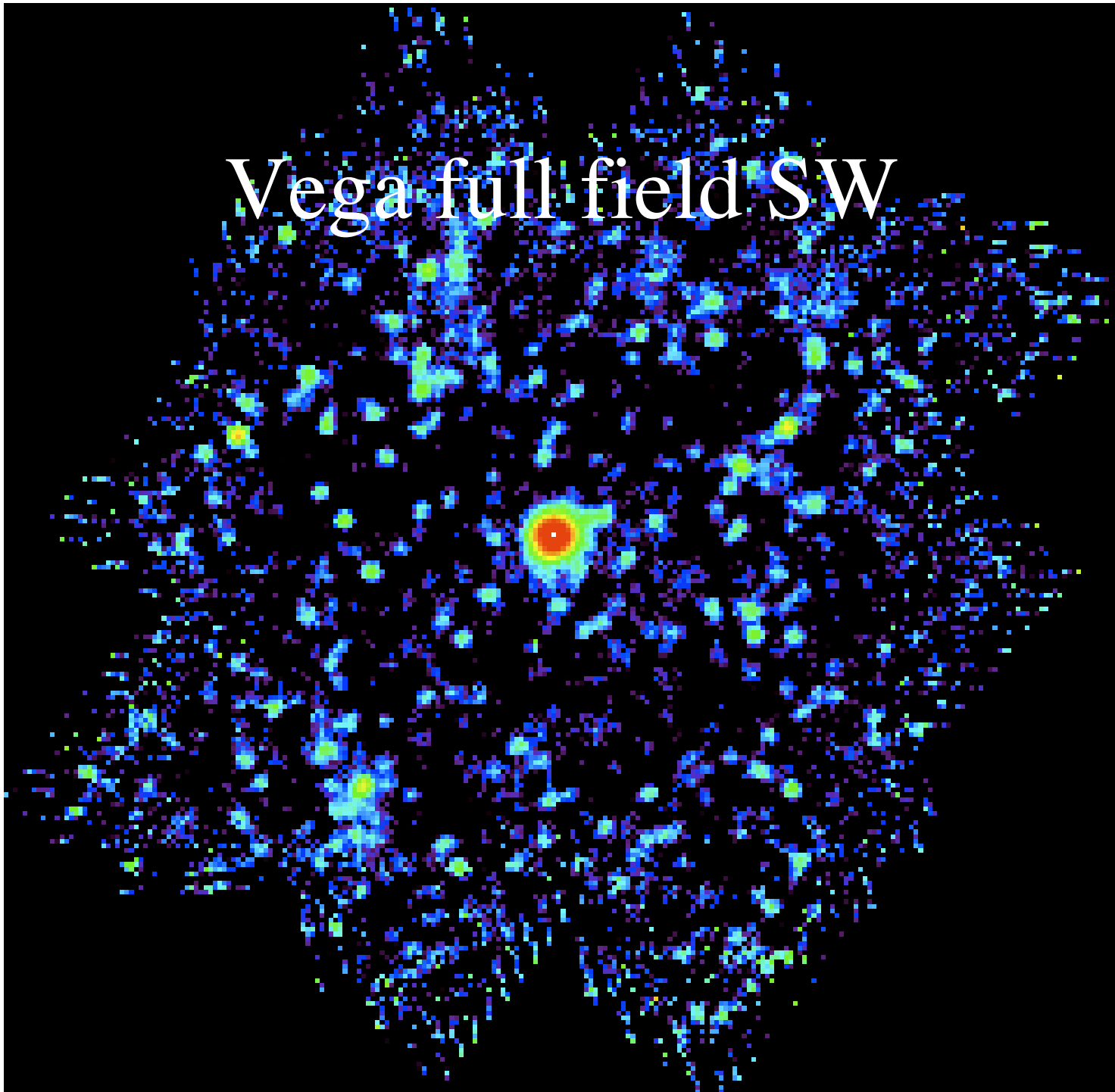
arcsec



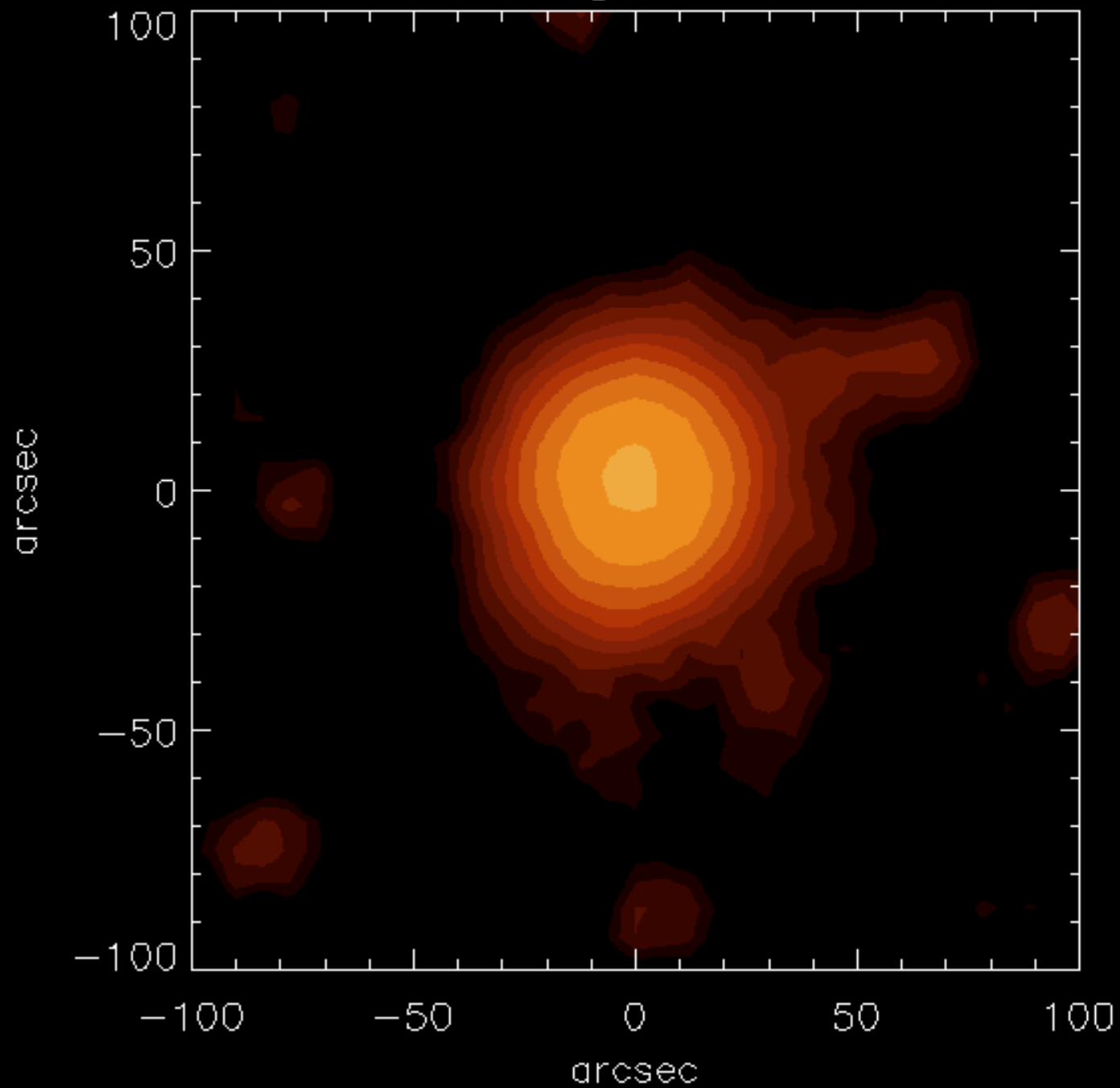




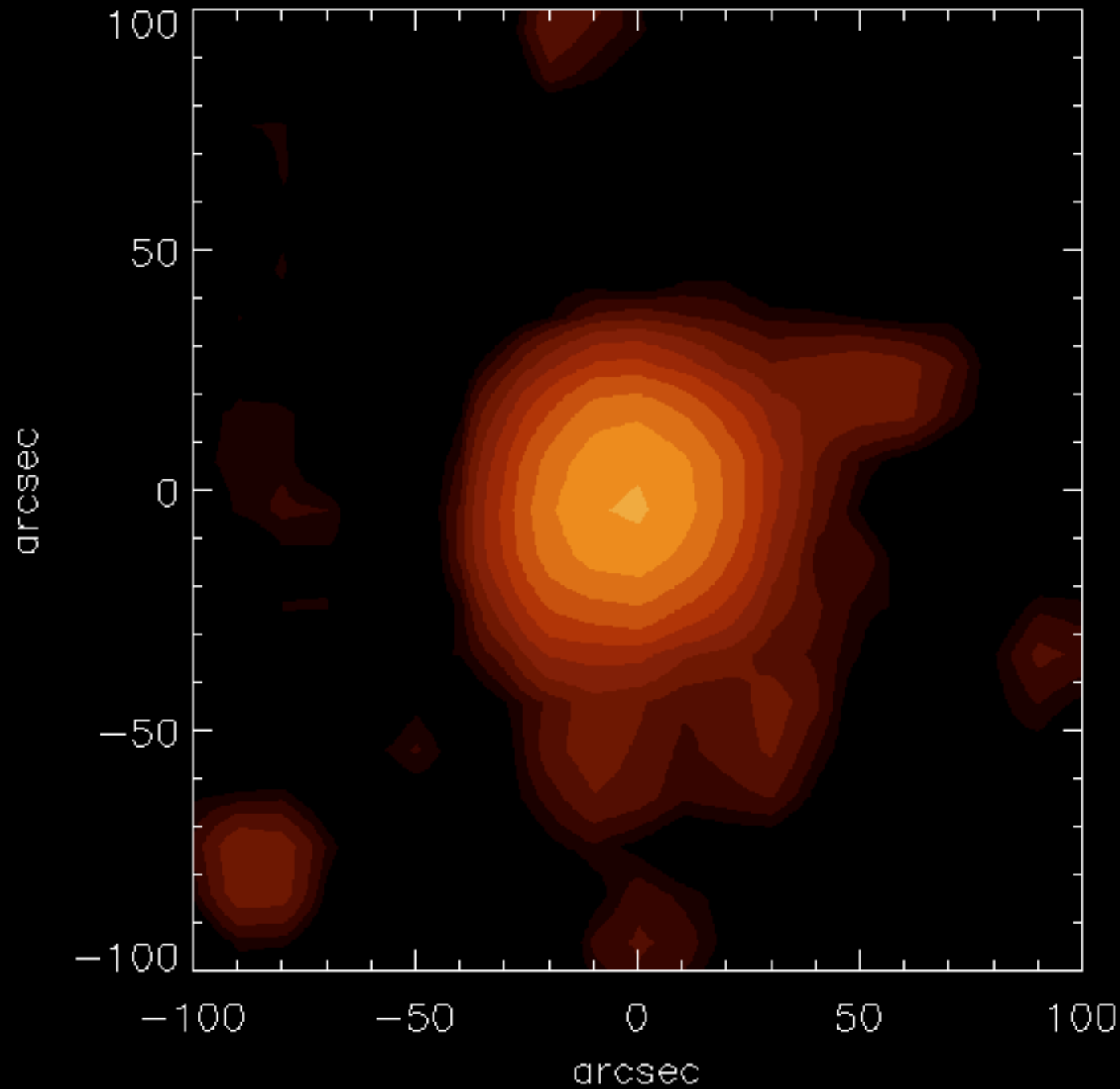
# Vega full field SW



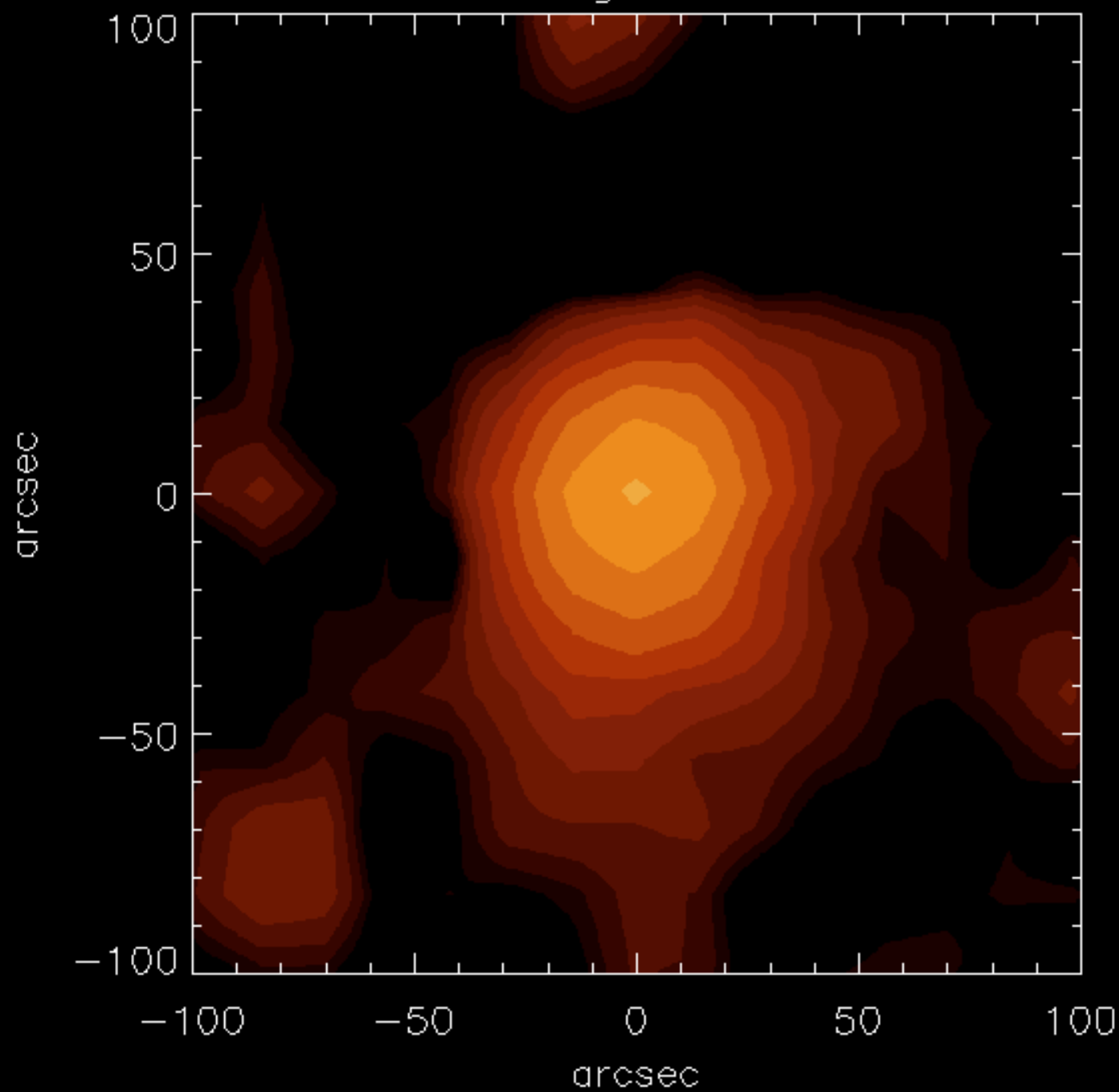
Vega\_SW



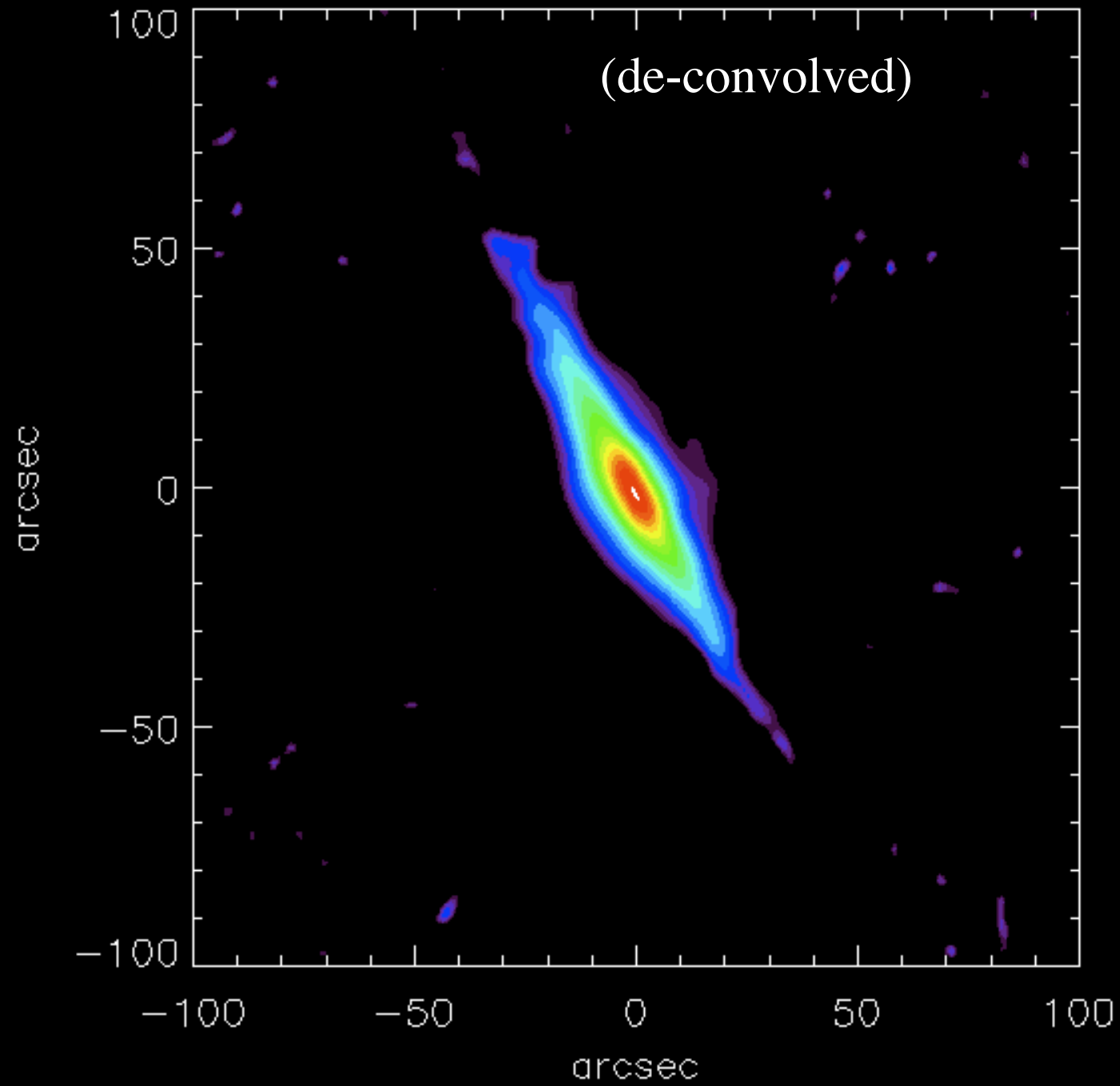
Vega\_MW



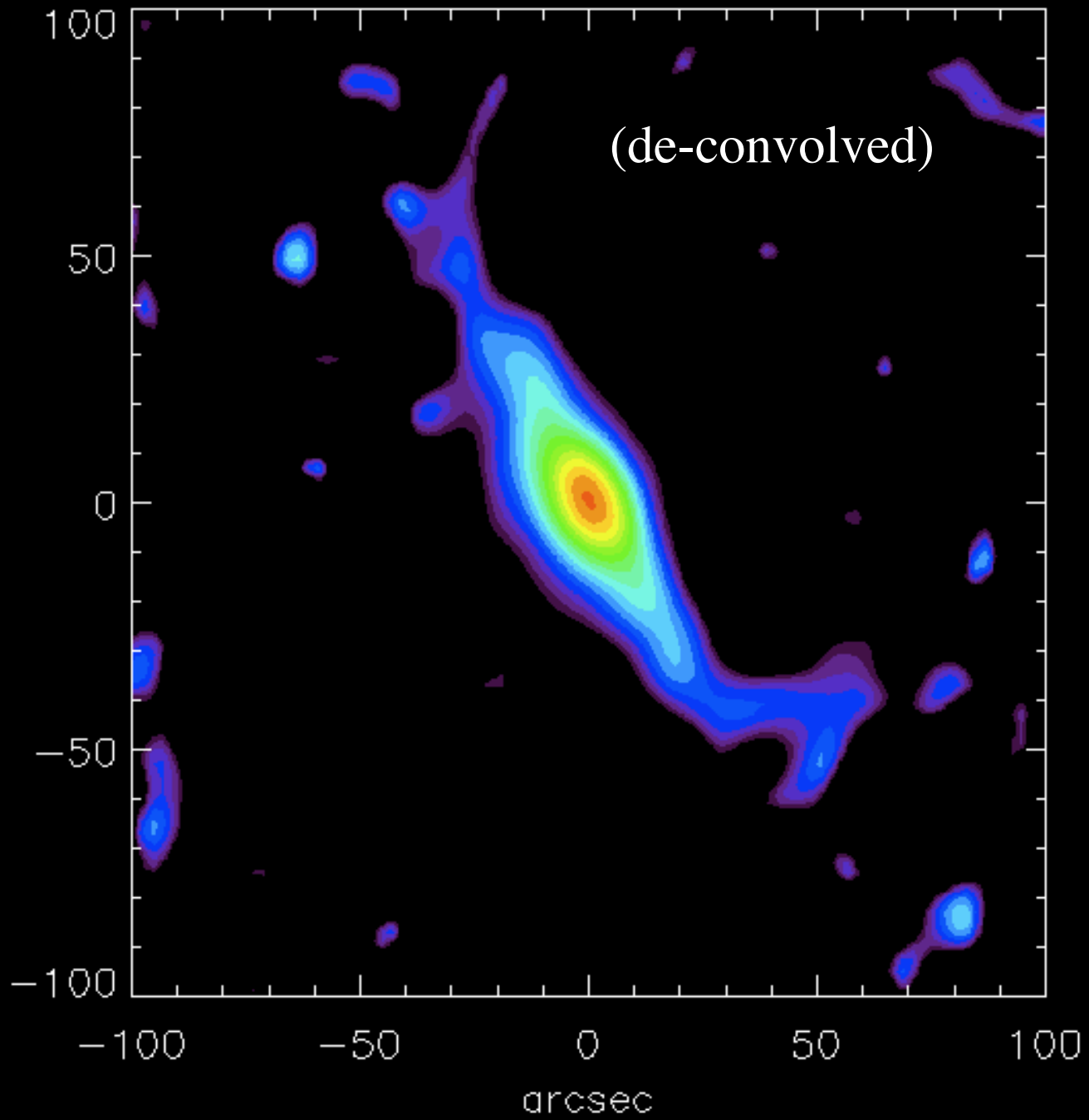
Vega\_LW



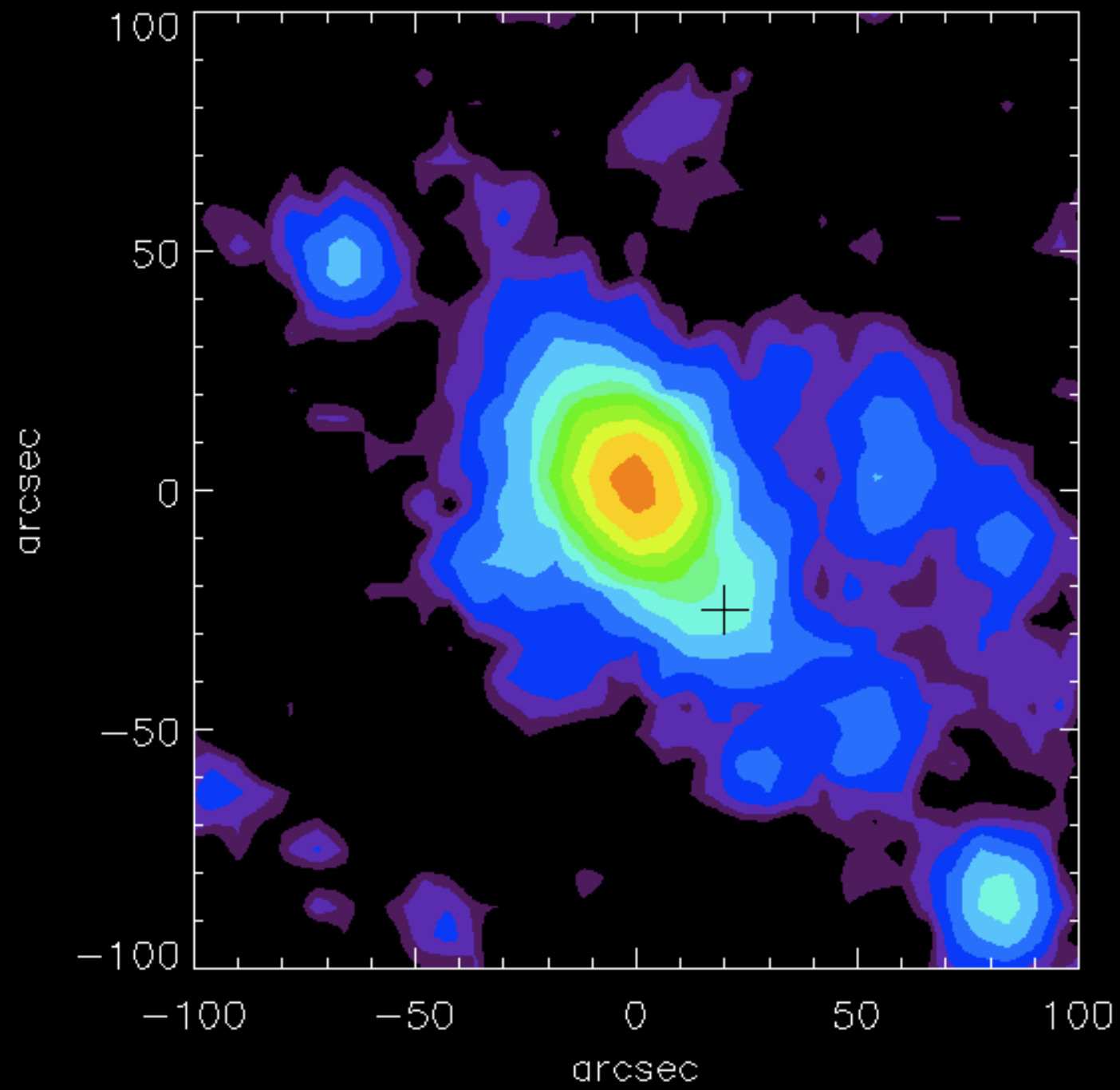
betaPic\_B



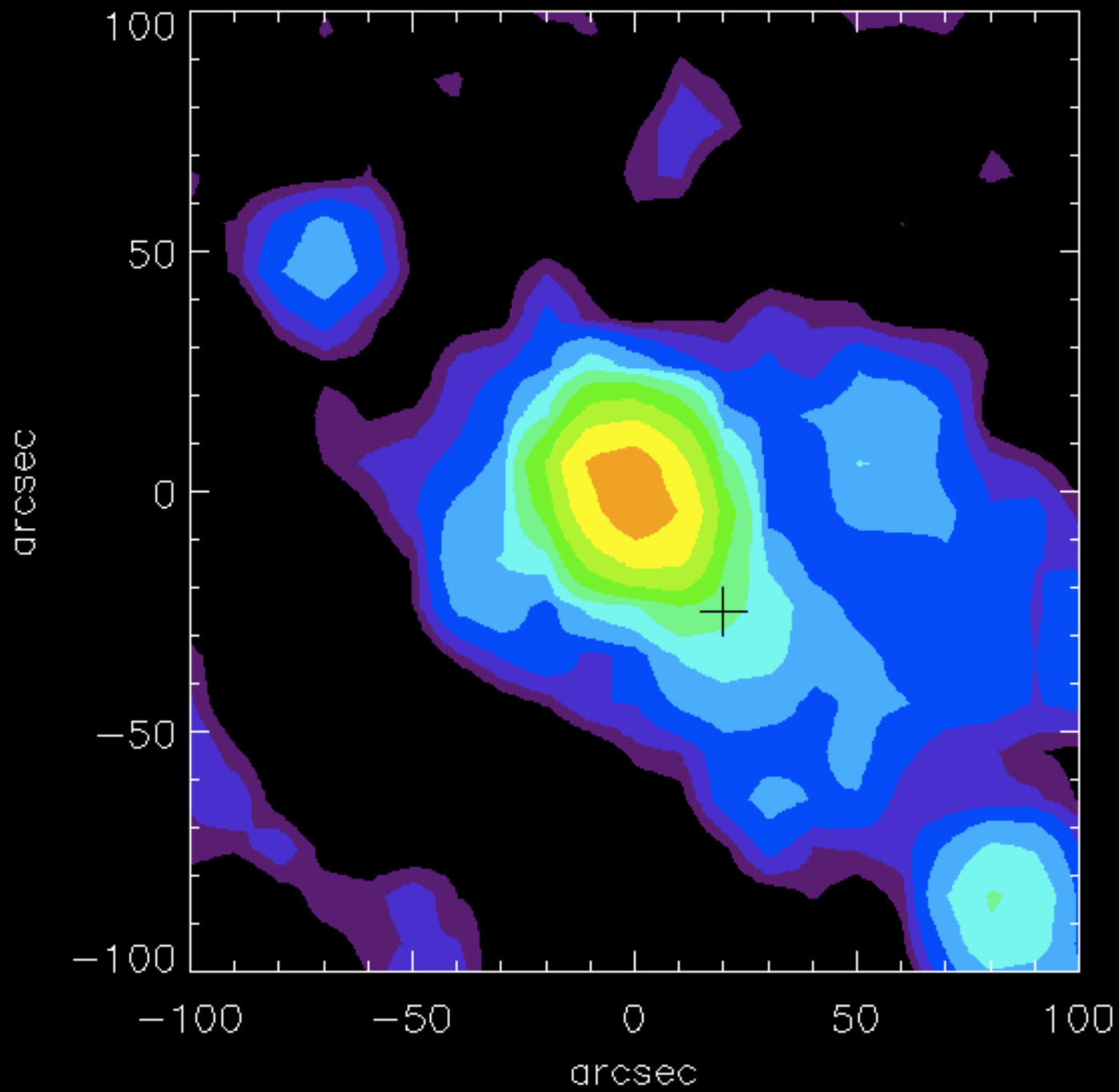
betaPic\_R



betaPic\_SW

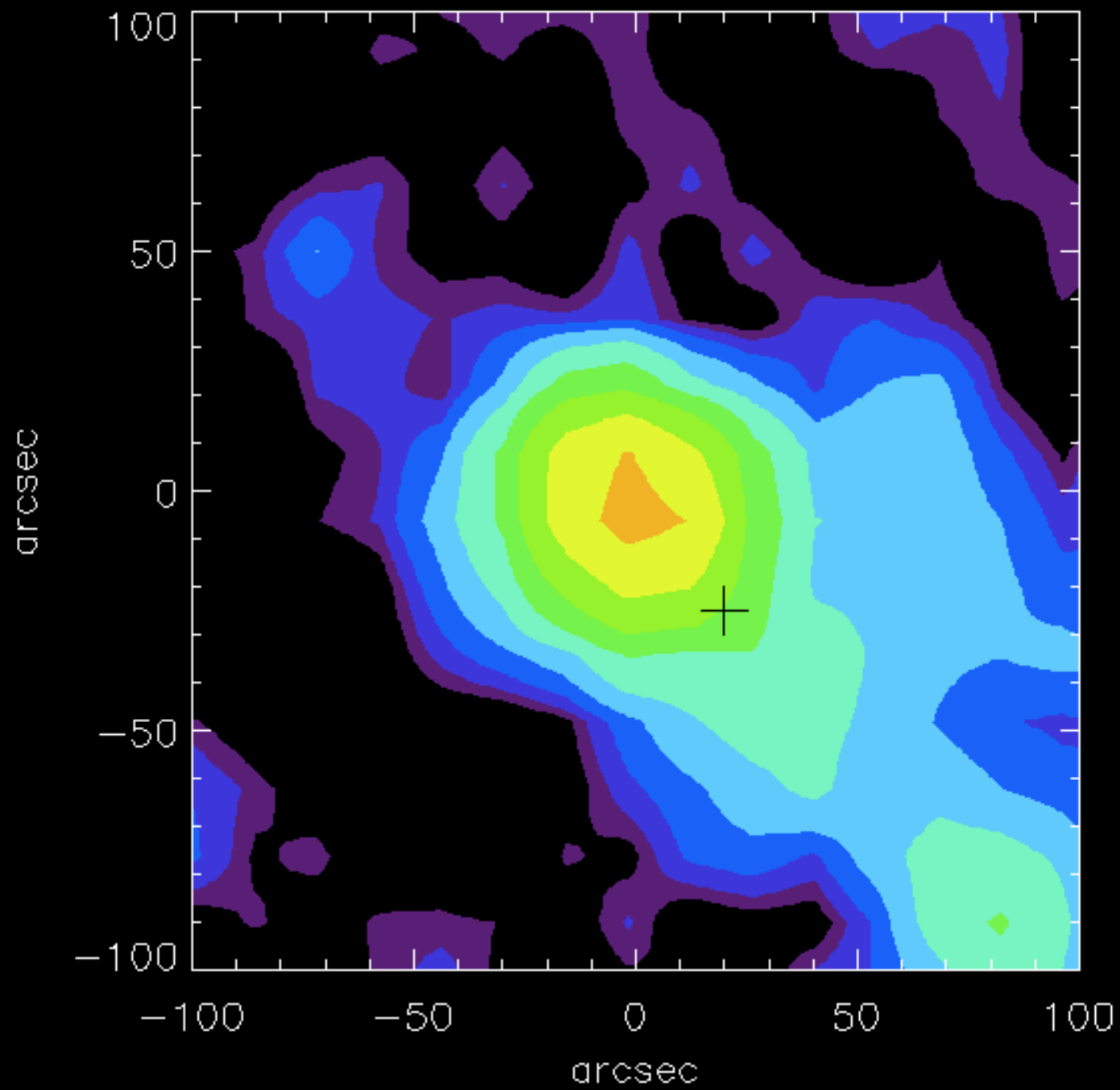


betaPic\_MW

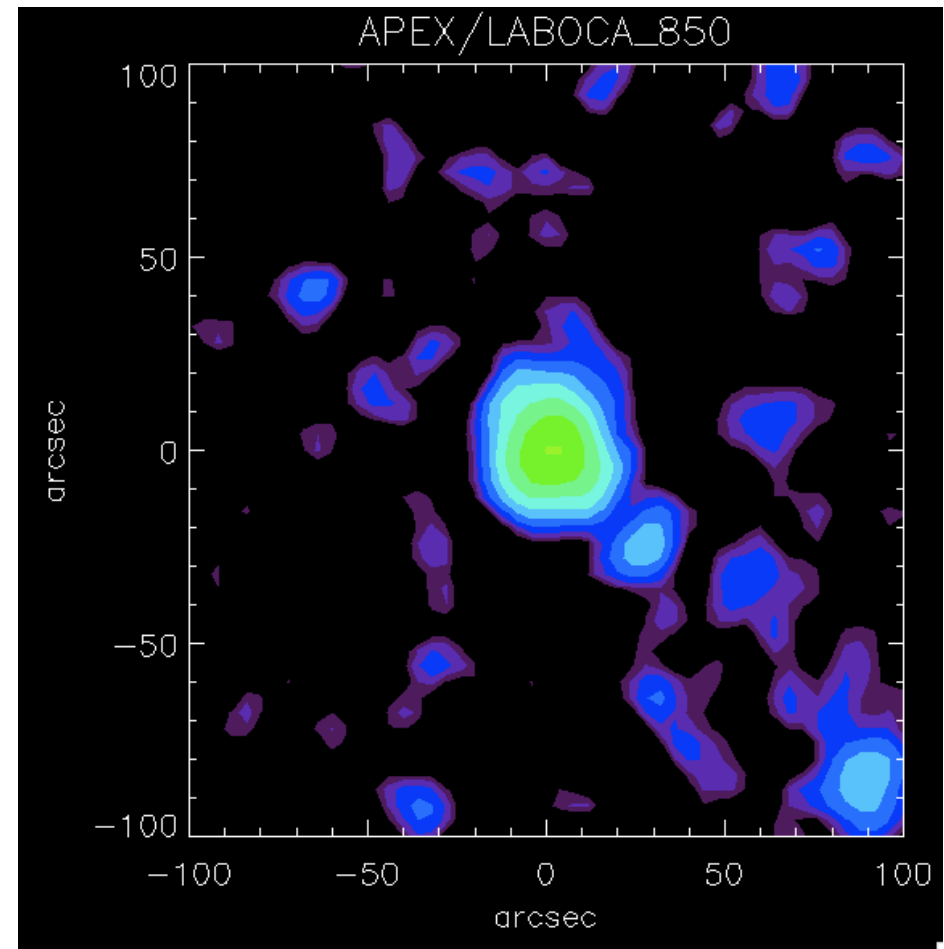
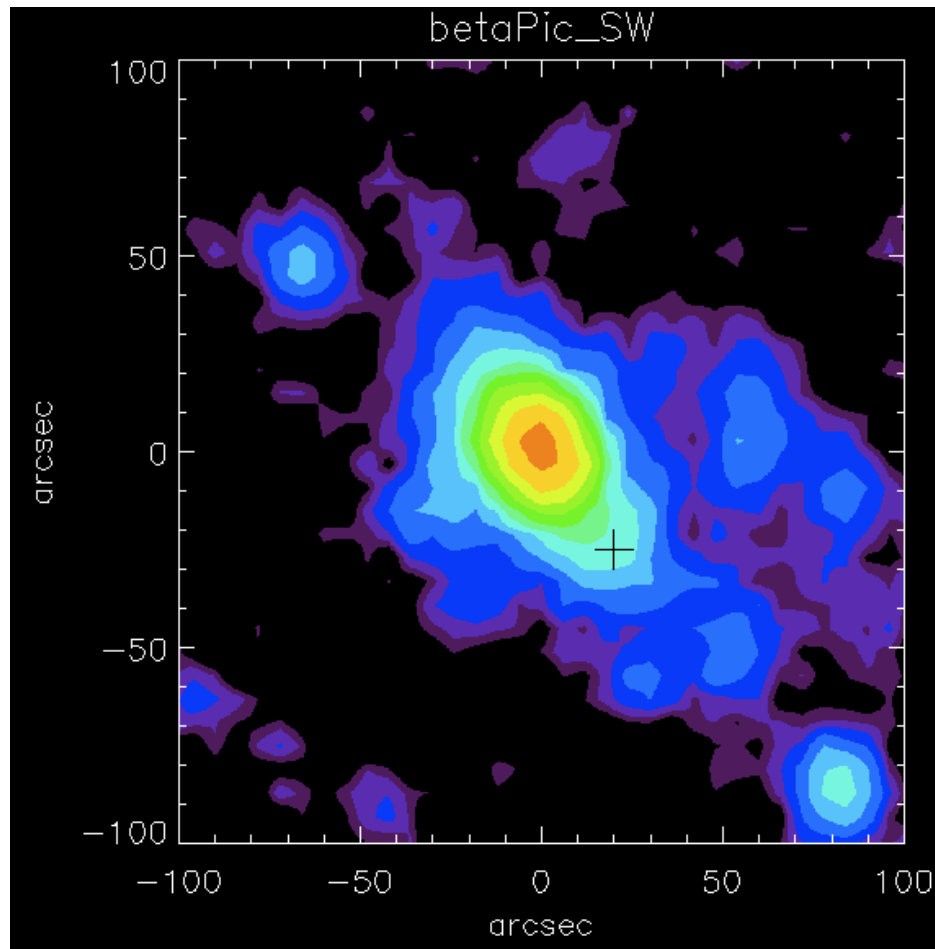




betaPic\_LW



# Comparison Spire\_350 & LABOCA\_870



# Cut along the beta Pic disk

