

## Herschel Infrared Cluster Survey (HICS)

*J. Davies, S. Eales, L. Cortese and S. Dye*  
*Cardiff University, UK*

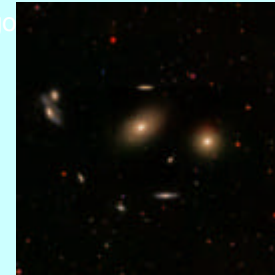
### Science

1. Complete samples of FIR selected galaxies.
2. Dust mass function to  $10^4 M_{\odot}$  and temperature distributions.
3. Correlation with other surveys (SDSS, GALEX, ALFALFA).  
Dust attenuation.
4. Morphology and star formation in the cluster environment.
5. Comparisons with more distant clusters.
6. Cold dust in and around galaxies.
7. Cold dust in the inter-galactic medium.

### Contact

Jonathan.Davies@astro.cf.ac.uk

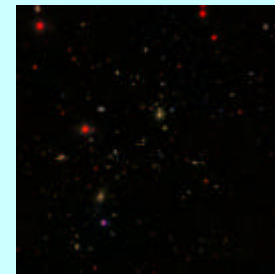
Virgo



Virgo



Coma



Abell1367