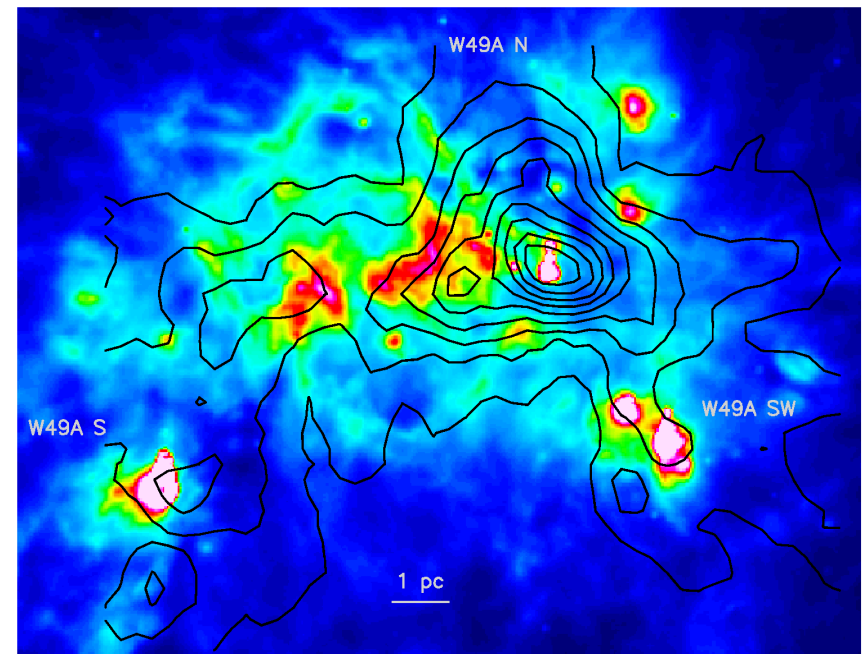


A Herschel survey of the most luminous star forming regions in the Galaxy

F. Wyrowski, R. Güsten, K. Menten, T.-C. Peng, P. Schilke, A. Weiss (MPIfR Bonn),
S. Bontemps, J. Braine, A. Baudry, F. Herpin (Bordeaux),
F. van der Tak (Groningen), R. Plume (Calgary), C. Kramer (Köln)

- Study environment of most massive clusters in our Galaxy, e.g. the famous W49 region
- Image in water lines and high-J CO, selected fine structure and hydride lines to study cooling on various scales
- Use as starburst templates to connect scales of nearby SF cores and starburst galaxies. Important as intermediate step between galactic and extragalactic projects

IRAC 8.0 micron & HCO+(3-2)



- Ground based preparatory work is ongoing
- Complementary to GT projects