



Installing HIPE

Mark Kidger
Herschel Community Support Group
Herschel Science Centre
Herschel Pre-Launch DP Hands-On Workshops
March 2009

HERSCHEL SPACE OBSERVATORY





A Warning!!

- **HIPE is a big package:**
 - 88 342 files, arranged in
 - 1938 folders
 - 1.5 GB (some small flavour differences)
 - Minimum 2GB RAM is currently required to install
 - For many operations 4GB, or even 8GB is required and large scan maps may require as much as 64GB.
 - You can never have too much RAM.
 - Use a fast Internet connection to download
 - Be patient! It can take a long time to download and install.
- **Download is highly platform dependent**
 - Windows and Mac follow essentially identical download procedures. Linux is “sui generis”.
 - But Windows takes much longer to install and uninstall than Mac or Linux, due to operating system differences.

HERSCHEL SPACE OBSERVATORY

What Operating System do I Need?



- **HIPE is supported on the three main operating systems**
 - Windows XP
 - Linux + Red Hat Enterprise 4
 - Mac (10.5 Leopard, 64 bit only)
- **What about Windows Vista?**
 - We have had problems with Vista because the InstallAnywhere installer software used by the HSC fails with Vista.
 - With Vista Service Pack 1 available and stability in the Vista platform, these problems should be solved soon.
 - We do have an experimental installer that works with Vista, although it is not ready for public release yet.

HERSCHEL SPACE OBSERVATORY



What Else do I Need?

- **HIPE is memory intensive: >1GB of RAM is essential.**
 - While HIPE should install on computers with 2GB of RAM, it is very dependent on how memory is managed.
 - On some Windows computers it may not be possible to run HIPE even with 2GB of memory if memory is allocated to other processes.
- **An up to date browser:**
 - Internet Explorer 6, or later
 - Mozilla 1.5, or later
 - Safari (with Mac or Windows)
 - SeaMonkey
- **Installation will fail if Java 1.6 is not installed.**
- **HSC is moving rapidly from 32-bit to 64-bit architecture in line with the transition in the IT industry.**
 - On Mac, Java 1.6 only exists for a 64-bit dual core.

HERSCHEL SPACE OBSERVATORY

How do I get to HIPE?



The screenshot shows the website interface for the Herschel Science Centre Development Team. The main content area is titled "Herschel Interactive Processing Environment: Download and Installation Instructions". It contains several sections:

- Herschel Interactive Processing Environment: Download and Installation Instructions**
 - The software package for HIPE is the application that allows users to work with the Herschel data, including finding the data products, interactive analysis, plotting of data and data manipulation.
 - Download the installer for HIPE**
 - The installer page has installation instructions for each operation system and gives the user the option to download an installation with or without the Java Runtime Environment (Except for MacOS X, where it must be downloaded separately).
 - Download the installer for a user release
 - Download the installer for the latest development release. This is an Alpha Release which has only been Unit tested. Also, it is not guaranteed that the latest release available with the installer corresponds to the latest hcscs new style development build
 - See the instructions below for installing on the different operating systems.
 - Operating Systems Supported**
 - The following systems are supported by HIPE:
 - Windows XP (Windows Vista is not supported)
 - MacOS X
 - Linux
 - Browsers Supported**
 - Please use the latest versions of the browsers.
 - Firefox
 - Safari
 - Internet Explorer
 - SeaMonkey
 - Minimum Hardware Requirements**
 - Windows/Linux 32-bit w/1GB RAM
 - Windows/Linux/Mac 64-bit w/1GB RAM
 - Information on the JRE (Java Runtime Environment)**
 - The installers for Windows and Linux come in two flavors. There is one with a jre (java runtime

HERSCHEL SPACE OBSERVATORY

- When HIPE is formally released, download will be similar to HSpot from the HSC web page, listed by operating system.



A Question of Flavour...

Download the offline installer for HIPE

See the instructions below for installing on the different operating systems.

Platform	With Java 32bit VM	With Java 64bit VM	Without Java VM	Instructions
Windows	Download 0.6.7.1	Not Available	Download 0.6.7.1	View
MacOSX	Not available	Not available	Download 0.6.7.1	View
Linux	Download 0.6.7.1	Download 0.6.7.1	Download 0.6.7.1	View

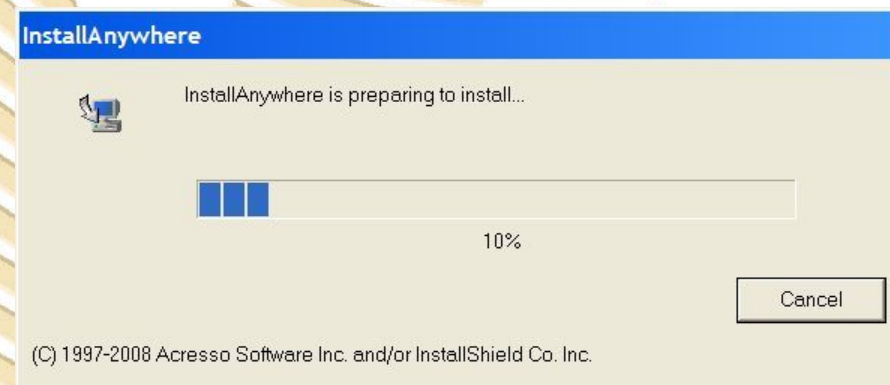
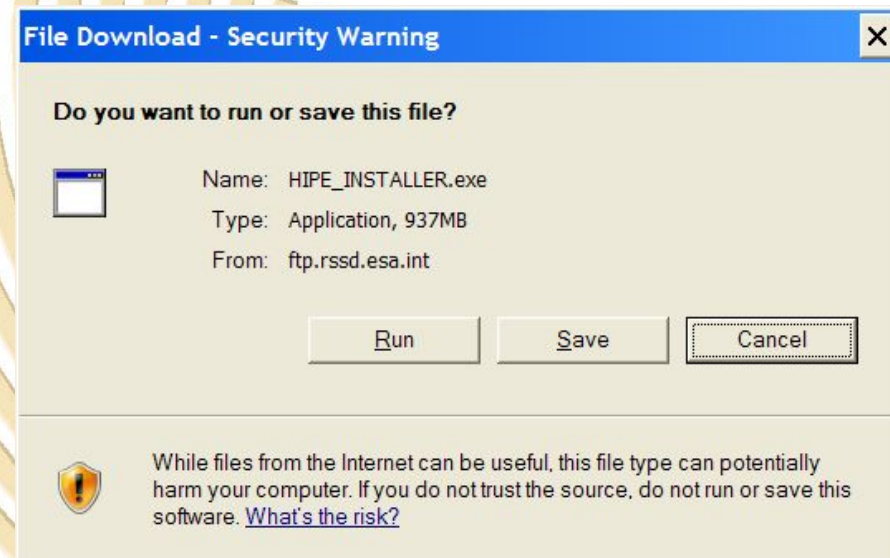
HERSCHEL SPACE OBSERVATORY

- HIPE comes with or without JRE (**Java Runtime Environment**) packaged, so you should choose both the Platform that you need and whether or not you require Java VM.
- Unless you are certain that you have JRE already installed, you should choose the Java VM option.



Windows and Mac Download

- The download and unpacking process is very similar.
- Once you have decided the Platform and Version, required, click on it to download.
- Windows will request confirmation (right)
 - Choose “Run”
- Mac will download immediately, without requesting confirmation.
- Both Platforms will then unpack automatically when the download ends.

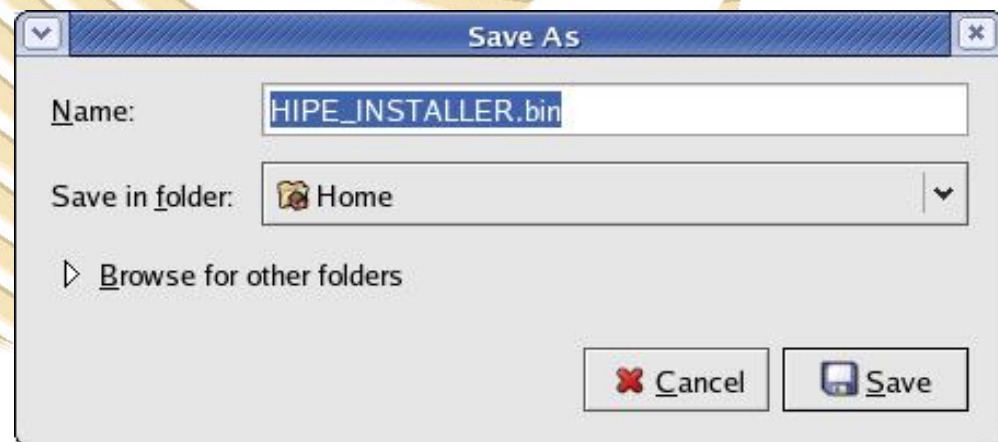
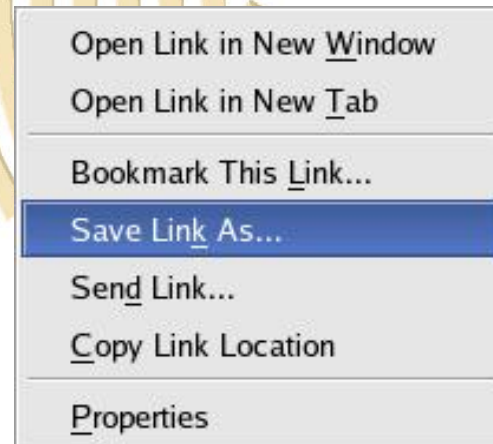


HERSCHEL SPACE OBSERVATORY



Linux

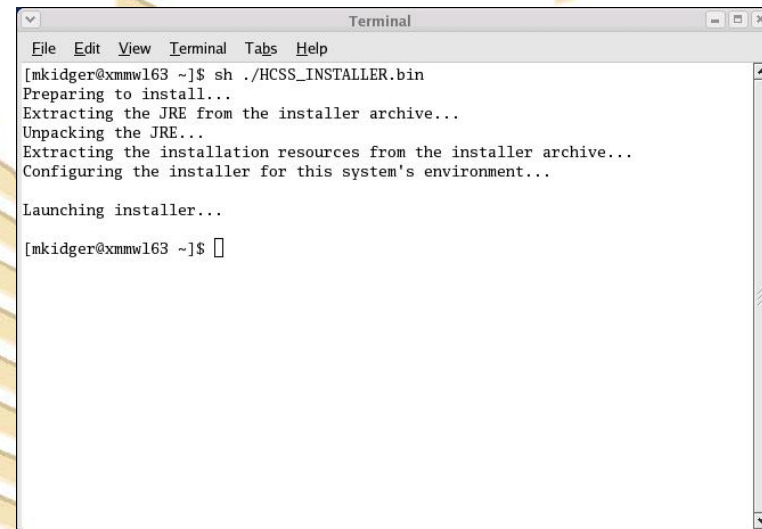
- For Linux, the download process is quite different.
- You must right click on the version that you want to download and install and select “Save Link As...”
- Then you should select the directory that the installer should be downloaded to.





Linux

- The installer will download and save in your chosen directory.
- Once download is complete, open a terminal and, in the same directory, write
- **sh ./HCSS_INSTALLER.bin** and return to start the installer.

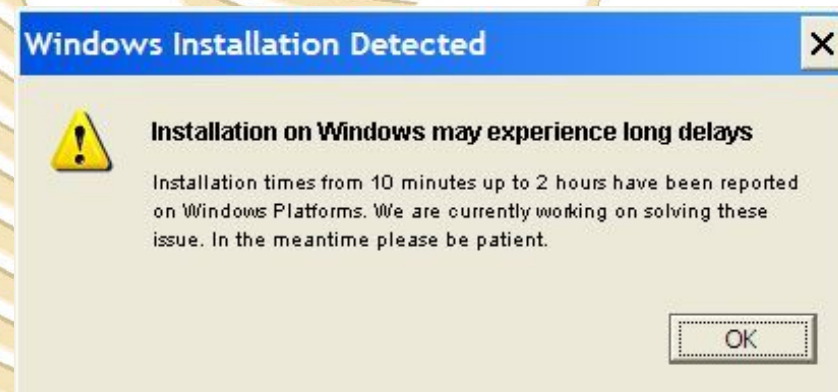
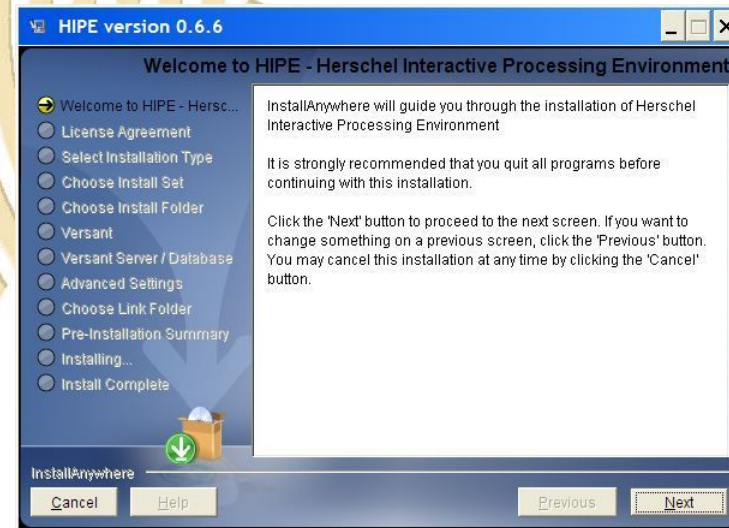


HERSCHEL SPACE OBSERVATORY



Configuration and Installation

- Final configuration and installation is (almost) identical for all operating systems.
- InstallAnywhere will guide you through the process of configuration, before waiting for confirmation of the final installation.
- The only (small) difference is that, if you are running Windows, a warning message will pop up.
 - Do not panic!
 - Take a deep breath.
 - Accept the warning.
 - Go and have a coffee.



HERSCHEL SPACE OBSERVATORY



How Long Does it Take?

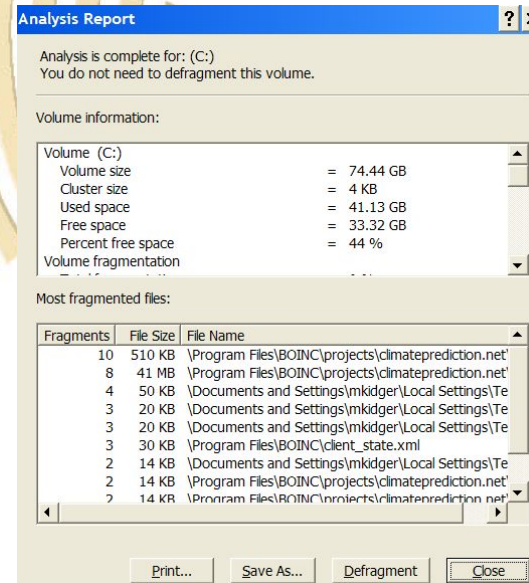
Typical time to...	Windows (>10Mb/s LAN line)	Windows (2.5 MB/s ADSL line)	Mac (>10Mb/s LAN line)	Linux (>10Mb/s LAN line)
Download	2 m	54 m	5 m	1.5 m
Unpack	1.5 m	1.5 m	<1 m	
Extract	5.5 m	11m	5.5 m	2.5 m
Configure	2 m	1 m	<1 m	0.5 m
Install	1h 20 m	1h 43m	5.5 m	11 m
Total	1h 31m	2h 50m	12 m	25 m

HERSCHEL SPACE OBSERVATORY

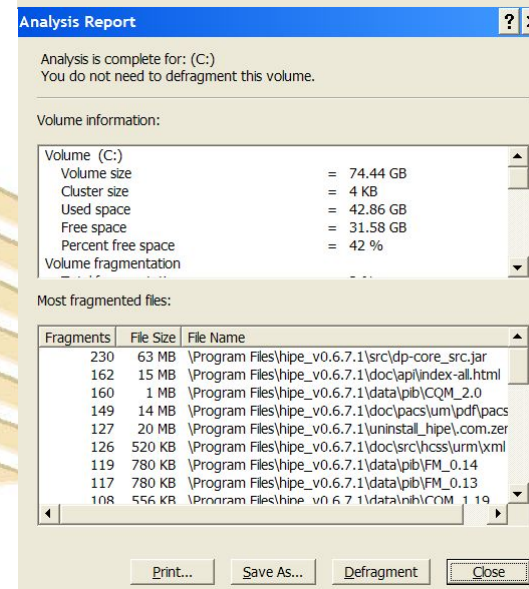
Why are we Waiting (for Windows)?



- There is probably not a single explanation; it is a combination of factors:
 - Windows handles files rather inefficiently (important when we install >80 000).
 - The amount of memory that can be assigned to installation is usually limited by the system.
 - The virus scanner checks each file individually.
 - Even installing on a clean disk (above right) leads to heavy fragmentation of files (below right).
 - However, the DP Team is working with Macrovision on some improvements that *should* greatly alleviate this problem for users.



Before HIPE installation



After HIPE installation

HERSCHEL SPACE OBSERVATORY



**Over to Bruno to hear more about
HIPE...**

HERSCHEL SPACE
OBSERVATORY