



Installing HIPE

Mark Kidger
Herschel Community Support Group
Herschel Science Centre
Herschel Pre-Launch DP Workshop
04/12/2008

HERSCHEL SPACE
OBSERVATORY



A Warning!!

- **HIPE is a big package:**
 - 100 894 files, arranged in
 - 2292 folders
 - 892-1009 Mbs (depending on flavour)
 - Absolute minimum 1GB RAM required
 - Use a fast Internet connection to download
 - Be patient! It can take a long time to download and install.
 - The BBC has a handy page to check your line speed, at the url:
<http://news.bbc.co.uk/2/hi/technology/7416471.stm>
- **Download is highly platform dependent**
 - Windows and Mac follow essentially identical download procedures. Linux is “sui generis”.
 - But Windows takes much longer to install and uninstall than Mac or Linux, due to operating system differences.

HERSCHEL SPACE OBSERVATORY

What Operating System do I Need?



- **HIPE is supported on the three main operating systems**
 - Windows XP
 - Linux + Red Hat Enterprise 4
 - Mac (10.5 Leopard)
- **What about Windows Vista?**
 - We have had problems with Vista because the InstallAnywhere installer software used by the HSC fails with Vista.
 - With Vista Service Pack 1 available and stability in the Vista platform, these problems should be solved soon.

HERSCHEL SPACE OBSERVATORY



What Else do I Need?

- Installation will fail if Java 1.6 is not installed.
- HIPE is memory intensive: $\geq 1\text{GB}$ of RAM is essential.
- An up to date browser:
 - Internet Explorer 6, or later
 - Mozilla 1.5, or later
 - Safari (with Mac or Windows)
 - SeaMonkey
- HSC is moving rapidly from 32-bit to 64-bit architecture in line with the transition in the IT industry. Mac + Java 1.6 supports only 64 bit.

HERSCHEL SPACE OBSERVATORY

How do I get to HIPE?



The screenshot shows the HSCDT website with a sidebar on the left containing links like 'HSCDT Home Page', 'Team Calendar (ESA)', 'Contact Lists', 'Distribution Lists', 'FTP area', 'TWiki pages', 'Installation Support', 'HSCDT Documentation', 'HSCDT Software', 'Problem Reporting', 'Herschel Related Links', 'RSSD Restricted Item', 'My Portal', 'Facilities', 'Find Us', 'Liveline', and 'Who's Who'. The main content area is titled 'Herschel Interactive Processing Environment: Download and Installation Instructions'. It includes sections for 'Download the installer for HIPE', 'Operating Systems Supported' (listing Windows XP, Vista, Mac OS X, and Linux), 'Browsers Supported' (listing Firefox, Safari, Internet Explorer, and SeaMonkey), 'Minimum Hardware Requirements' (listing 32-bit and 64-bit systems with 1GB RAM), and 'Information on the JRE (Java Runtime Environment)'.

- At the moment there is only an Alpha-tested pre-release version on the Herschel Science Centre Development Team (HSCDT) web pages, under password protection.
- When HIPE is formally released, download will be similar to HSpot from the HSC web page, listed by operating system.



A Question of Flavour...

- HIPE comes with or without JRE (**Java Runtime Environment**) packaged, so you should choose both the Platform that you need and whether or not you require Java VM.
- Unless you are certain that you have JRE already installed, you should choose the Java VM option.
- Public releases will have fewer options, with just the last release!

• Download User Releases

Platform	Includes Java VM	Without Java VM	Release Notes	Instructions
Windows	Download 0.6.6 (Alpha Release. For AT use only) Download 13.2 (875.7M) Download 13.1 Download 12.2	Download 0.6.6 (Alpha Release. For AT use only) Download 13.2 (850.4M) Download 13.1 Download 12.2	What's New in 0.6.6 What's New in 13.2 What's New in 13.1 What's New in 12.2	View
MacOSX		Download 0.6.6 (Alpha Release. For AT use only) Download 13.2 (849.8M) Download 13.1 Download 12.2	What's New in 0.6.6 What's New in 13.2 What's New in 13.1 What's New in 12.2	View
Linux	Download 0.6.6 (Alpha Release. For AT use only) Download 13.2 (931.3M) Download 13.1 Download 12.2	Download 0.6.6 (Alpha Release. For AT use only) Download 13.2 (882.5M) Download 13.1 Download 12.2	What's New in 0.6.6 What's New in 13.2 What's New in 13.1 What's New in 12.2	View

- **Download Latest Development Release (hcss-core: 284, hcss-apps: 41, dp-core: 366, dp-hifi: 211, dp-pacs: 236, dp-spire: 222)**

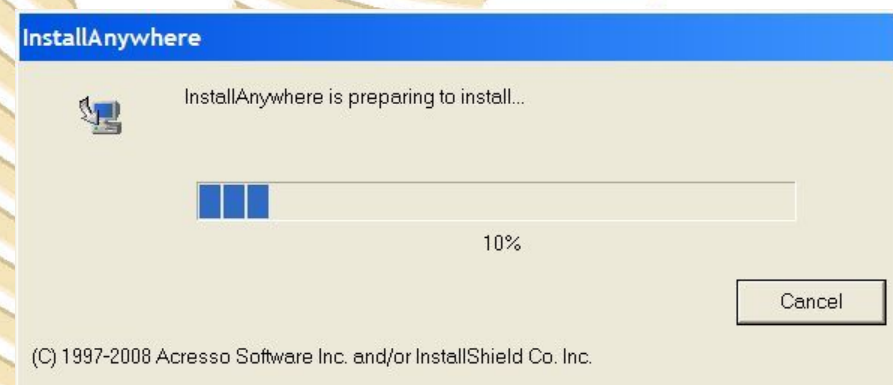
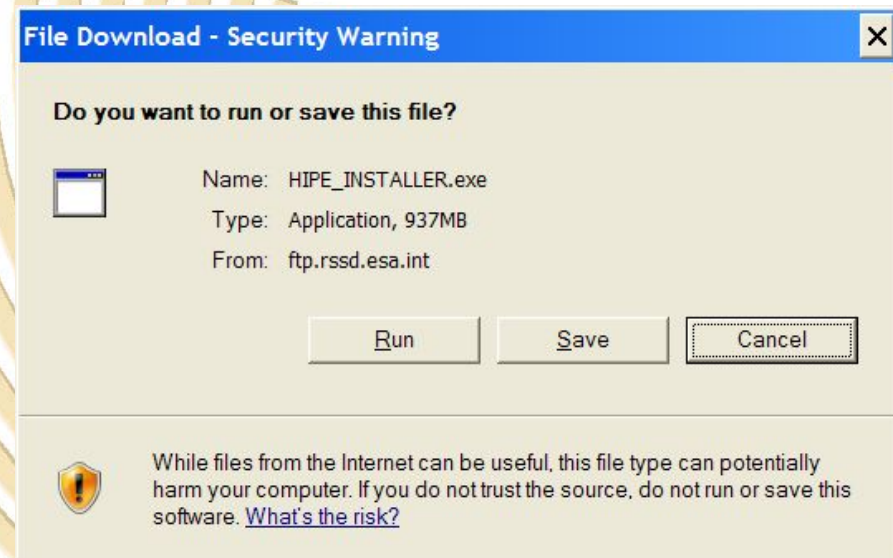
This is an Alpha Release which has only been Unit tested. Also, it is not guaranteed that the latest release available with the installer corresponds to the latest hcss new style development build

Platform	Includes Java VM	Without Java VM	Instructions
Windows	Download Latest (920.6 MBs)	Download Latest (892.9 MBs)	View
MacOSX		Download Latest (892.2 MBs)	View
Linux	Download Latest (982.3 MBs)	Download Latest (926.5 MBs)	View



Windows and Mac Download

- The download and unpacking process is very similar.
- Once you have decided the Platform and Version, required, click on it to download.
- Windows will request confirmation (right)
 - Choose “Run”
- Mac will download immediately, without requesting confirmation.
- Both Platforms will then unpack automatically when the download ends.

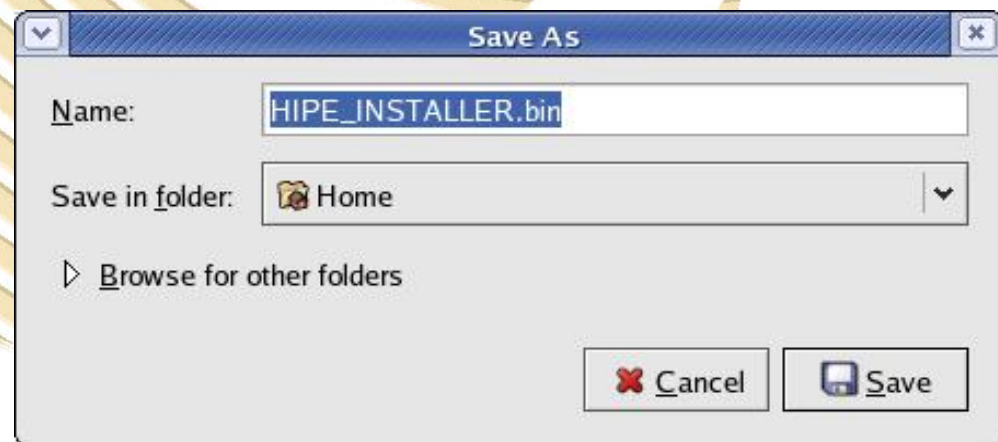
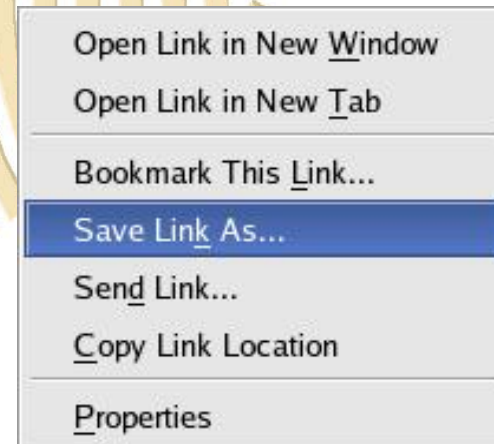


HERSCHEL SPACE OBSERVATORY



Linux

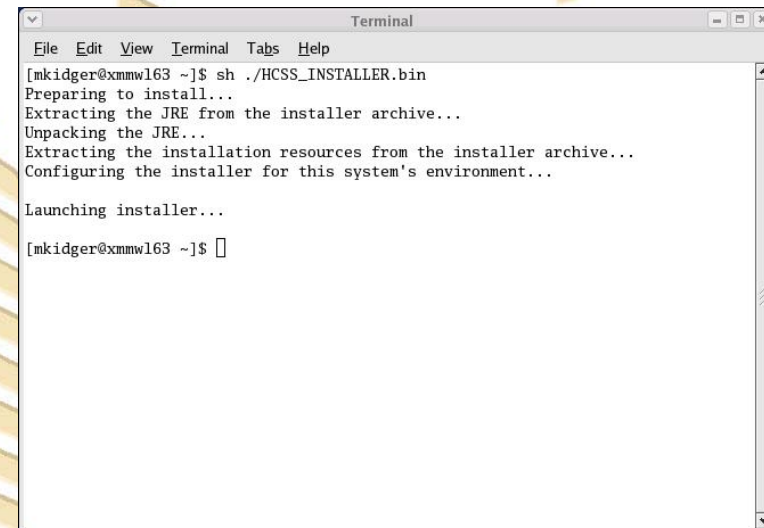
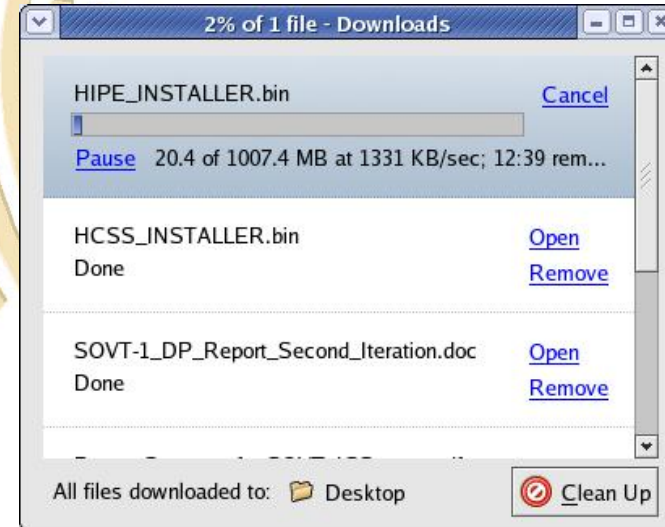
- For Linux, the download process is quite different.
- You must right click on the version that you want to download and install and select “Save Link As...”
- Then you should select the directory that the installer should be downloaded to.





Linux

- The installer will download and save in your chosen directory.
- Once download is complete, open a terminal and, in the same directory, write
- **sh ./HCSS_INSTALLER.bin** and return to start the installer.

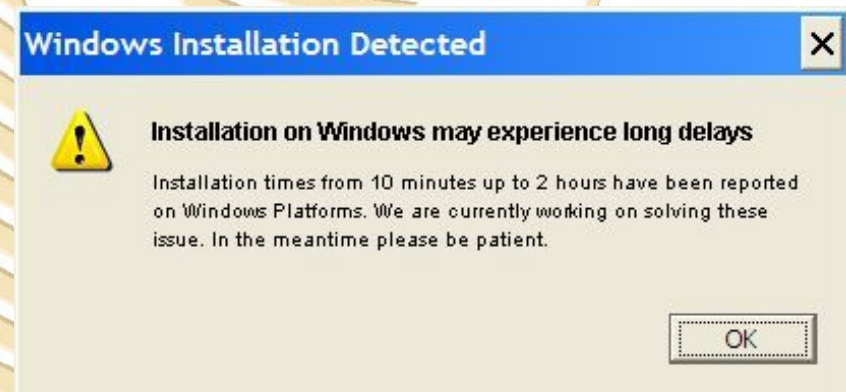
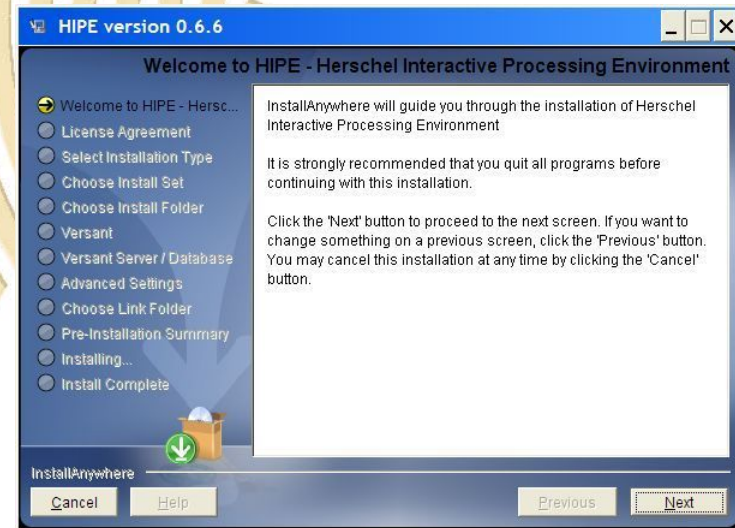


HERSCHEL SPACE OBSERVATORY



Configuration and Installation

- Final configuration and installation is (almost) identical for all operating systems.
- InstallAnywhere will guide you through the process of configuration, before waiting for confirmation of the final installation.
- The only (small) difference is that, if you are running Windows, a warning message will pop up.
 - Do not panic!
 - Take a deep breath.
 - Accept the warning.
 - Go and have a coffee.



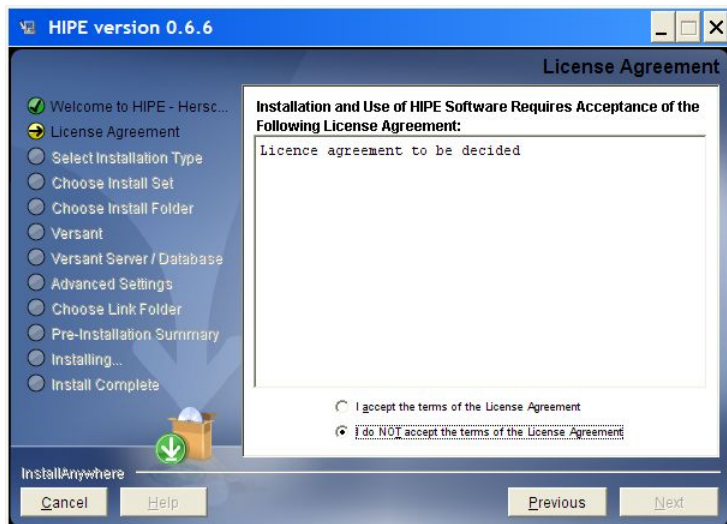
HERSCHEL SPACE OBSERVATORY

Configuring your Installation I

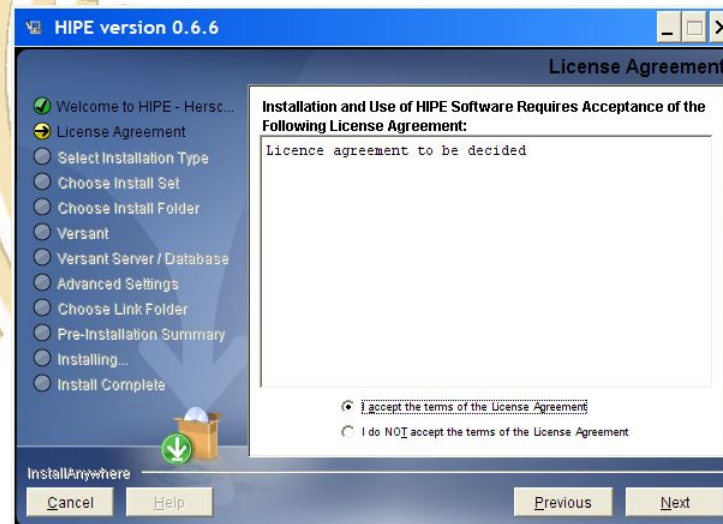


HERSCHEL SPACE OBSERVATORY

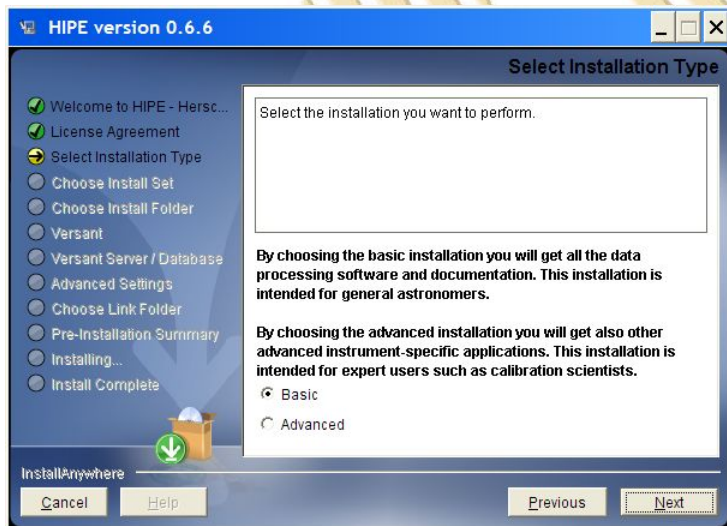
1



2



3



4



At any point you can change your mind and go back.



Mark Kidger

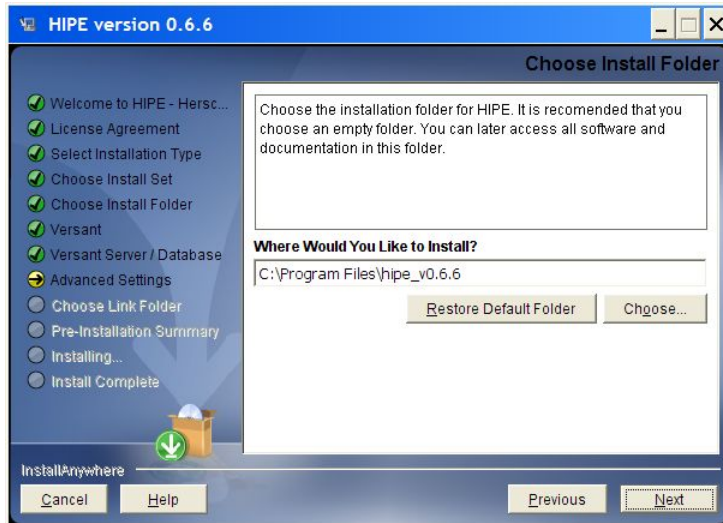
VG # 11

<http://herchel.esac.esa.int/>

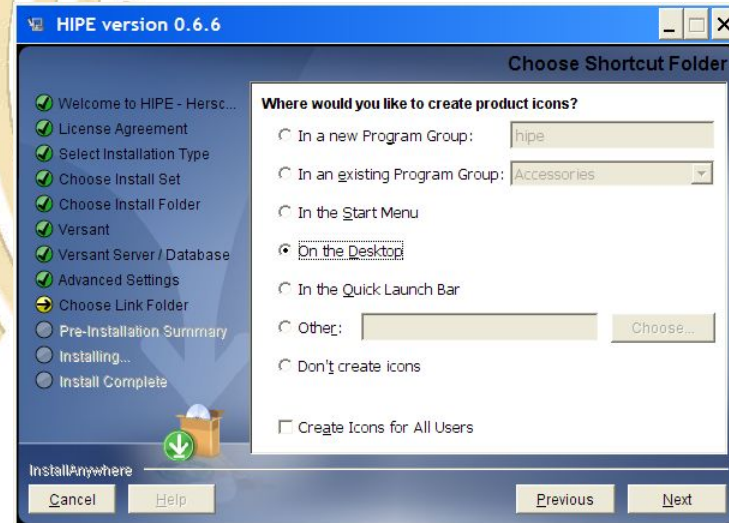
Configuring your Installation II



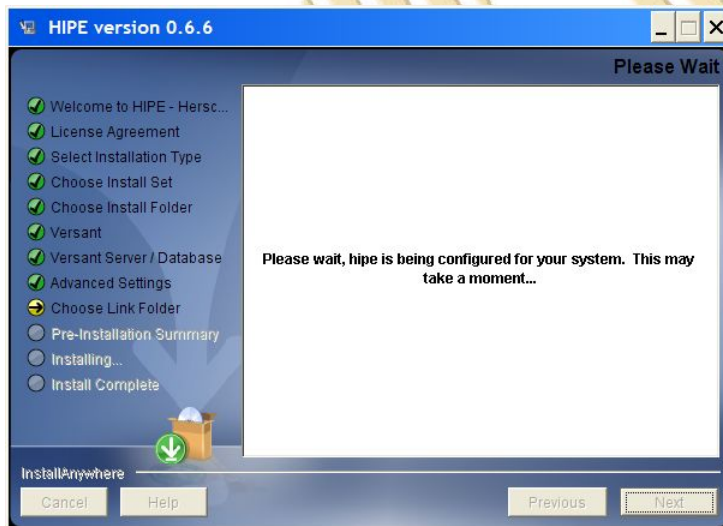
5



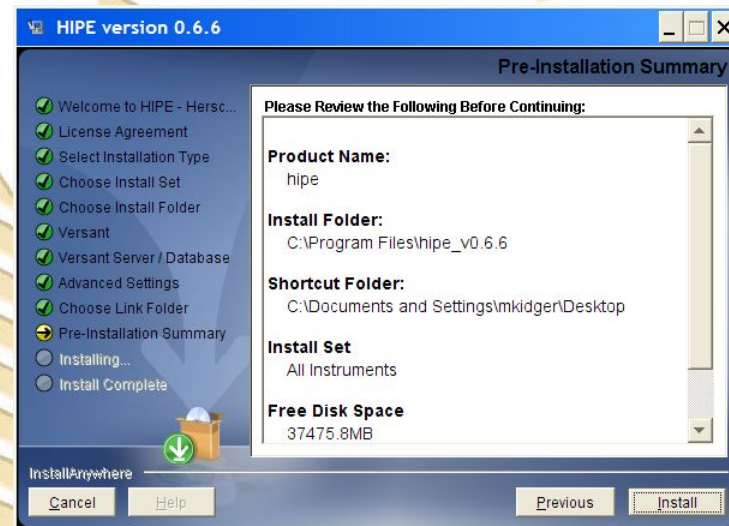
6



7



8





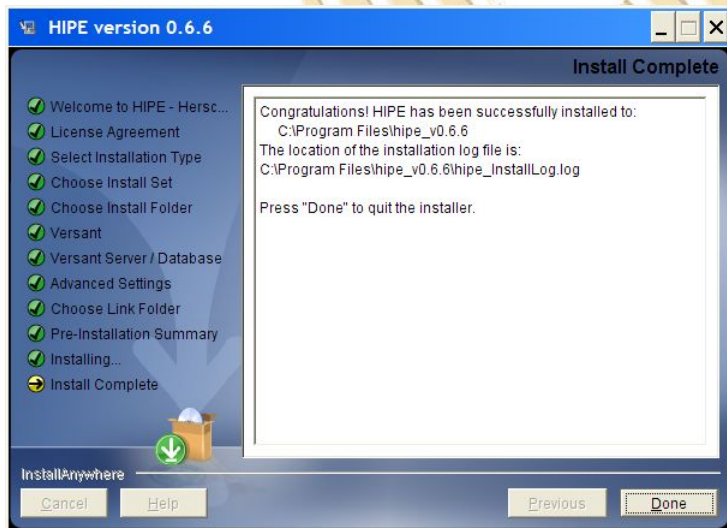
Ready to Install

1

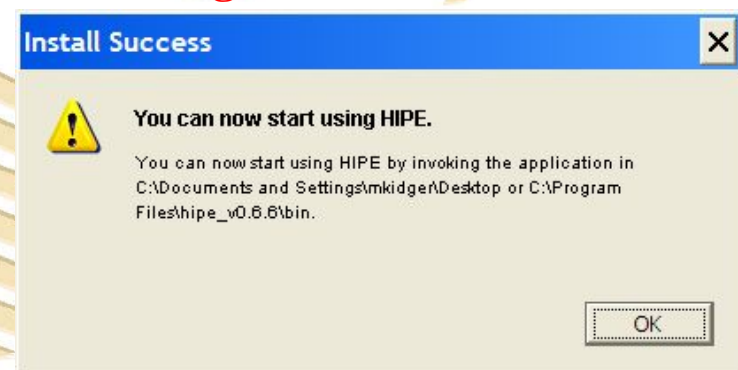


- If you have followed the instructions correctly...
- Congratulations!
- ... You will receive the message below and can start to reduce data from Herschel.

2



And Bingo! It's done.



HERSCHEL SPACE OBSERVATORY



How Long Does it Take?

Typical time to...	Windows (>10Mb/s LAN line)	Windows (2.5 MB/s ADSL line)	Mac (>10Mb/s LAN line)	Linux (>10Mb/s LAN line)
Download	10.5 m	25 m	5 m	12 m
Unpack	4.5 m	3.5 m	<1 m	2 m
Install	1h 9 m	2h 7m	5.5 m	11 m
Total	1h 24m	2h 36m	12 m	25 m

HERSCHEL SPACE OBSERVATORY



How Long Does it Take?

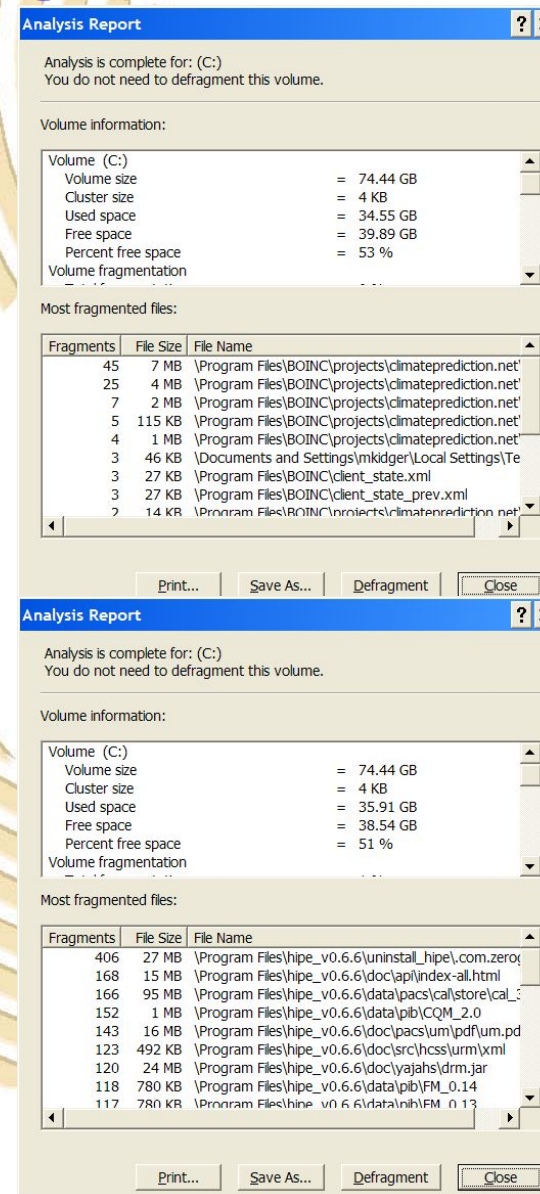
- Highly dependent on the computer, line speed and operating system.
 - Download usually uses only a fraction of the available bandwidth.
- End to end download and installation times tend to be in the range 15 to 30 minutes with Linux and Mac.
 - Older and less powerful machines are, logically, slower.
- Windows can take anything from 40 minutes to more than 2 hours (different people report widely differing results).

HERSCHEL SPACE OBSERVATORY

Why are we Waiting (for Windows)?



- There is probably not a single explanation; it is a combination of factors:
 - Windows handles files rather inefficiently (important when we install >100 000).
 - The virus scanner checks each file individually.
 - Even installing on a clean disk (above right) leads to heavy fragmentation of files (below right).
 - However, the DP Team is working with Macrovision on some improvements that *should* greatly alleviate this problem for users.



Before HIPE
installation

After HIPE
installation

HERSCHEL SPACE
OBSERVATORY

A large, golden-colored spiral graphic that fills the background of the slide. It is composed of many thin, curved lines that spiral outwards from a central point, creating a sense of depth and movement.

**Over to Bruno Merin to hear more
about HIPE....**

HERSCHEL SPACE
OBSERVATORY